

Stampin' Anonymous

August 2019 Tutorials



Thank you for your purchase! I hope that you enjoy the fabulous “better than flat” projects that my fellow demonstrators and I have created for you this month. I appreciate your loyalty! Please remember that these special tutorials are for you, and I do kindly ask that you not share them. If you’d like to share an idea, please alter the project to make it your own and share it in your own words OR direct others to where they can access the tutorial from me. The demonstrators that made these tutorials put a lot of work into what they created. Your understanding is appreciated.

If I can answer any questions or help you with online ordering, please don’t hesitate to call me. I want to give you the BEST service I can!

Stamp Your Art Out!

Marisa Alvarez

Stampin' Up!® Demonstrator 2172282

847-922-6795

marisa@kitchentablestamper.com

<https://www.kitchentablestamper.com>

Stampin' Anonymous Tutorials ©Stampin' UP!

Many Merry Thanks 2, 4, 6, 8 Gift Bag



Supply List:

- 151362 Dashing Deer Stamp Set
- 151328 Pop of Petals Stamp Set
- 147084 Cherry Cobbler Stampin' Pad
- 147115 Soft Suede Stampin' Pad
- 149484 Magnolia Lane Designer Series Paper
- 133676 Mossy Meadow Cardstock
- 119684 Cherry Cobbler Cardstock
- 100730 Whisper White Cardstock
- 132178 Silver Foil Sheets
- 148012 Sprig Punch
- 147041 Four Petal Flower Punch
- 144668 Everyday Label Punch
- 144142 Clear Faceted Gems
- 144213 3/8" Silver Metallic-Edge Ribbon
- 138995 Tear & Tape Adhesive
- 110755 Multipurpose Liquid Glue
- 104430 Stampin' Dimensionals
- 122334 Simply Scored Tool
- 102300 Bone Folder

Project Details:

- Mossy Meadow Cardstock
 - 8-1/2" x 5-1/2", scored at 2", 4", 6", and 8" on the 8-1/2" side and scored at 2" on the 5-1/2" side
- Whisper White Cardstock
 - Scrap for punching Everyday Label
- Cherry Cobbler Cardstock
 - 2-1/2" x 3-1/2" for stamping and punching Four Petal Flower
- Silver Foil Paper
 - 2-1/2" x 3-1/2" for punching two Sprig Punch
- Magnolia Lane Designer Series Paper
 - 1-3/4" x 3-1/4"

Instructions:

1. Score your Mossy Meadow Cardstock according to the measurements above then work all the scores with the bone folder.
2. Cut the bottom tabs apart and trim away the smallest panel. Add Tear & Tape Adhesive as shown in the pictures below.



3. Assemble your gift bag making sure that the glue tab is in the back of the bag. When you close the bottom, the side tabs go in first, then the back tab and finally the front tab secures the bottom in a neat manner leaving all seams to the back of the bag.
4. Adhere your designer series paper to the front panel of the bag using Multipurpose Liquid Glue.
5. To close the bag, pinch the sides of the bag in forming a short gusset and punch a hole in the top center through the front and back of the bag. Thread with metallic-edge ribbon and tie a large bow.
6. Stamp “Many Merry Thanks” with Soft Suede Ink on Whisper White scrap and punch with the Everyday Label Punch.
7. Punch two sprigs from Silver Foil Sheet and adhere to the top of the label with Multipurpose Liquid Glue.
8. Stamp Cherry Cobbler Cardstock twice with flower from Pop of Petals using Cherry Cobbler Ink. Punch out with the Four Petal Flower Punch. Roll the petals of one of the flowers between your thumb and index finger to give the top layer of petals a cup shape. Adhere the cup shaped flower to the second flat flower with Multipurpose Liquid Glue making sure that your flower petals alternate. Embellish with a Clear Facetted Gem. Adhere to the label on top of the sprigs using a Stampin’ Dimensional.
9. Using Stampin’ Dimensionals, adhere the label to the gift bag so that the top of the label just touches the center of the bow. This way your bag can be untied to remove treats or small gifts and then tied back up to use again.

Merry Christmas To All 2" x 2" Box





Supply List:

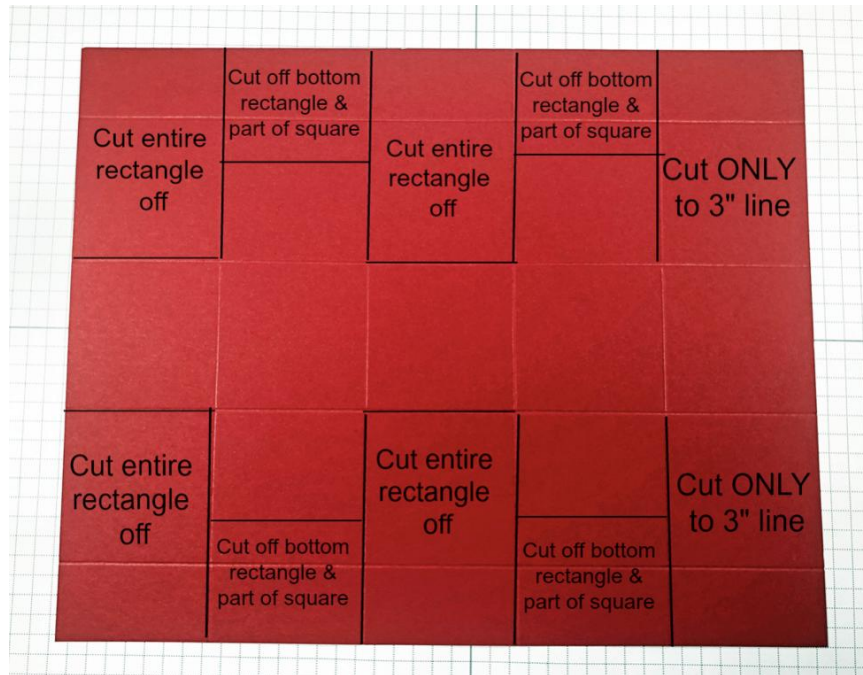
- 147702 Merry Christmas To All Stamp Set
- 147084 Real Red Classic Stampin' Pad
- 102283 VersaMark Pad
- 102482 Real Red Cardstock
- 100730 Whisper White Cardstock
- 119868 1" Circle Punch
- 146320 Detailed Trio Punch
- 147912 Merry Christmas Dies
- 144146 3/8" Gold Metallic-Edge Ribbon
- 109129 Gold Stampin' Emboss Powder
- 129053 Heat Tool
- 122334 Simply Scored Scoring Tool
- 102300 Bone Folder
- 110755 Multipurpose Liquid Glue

Project Details:

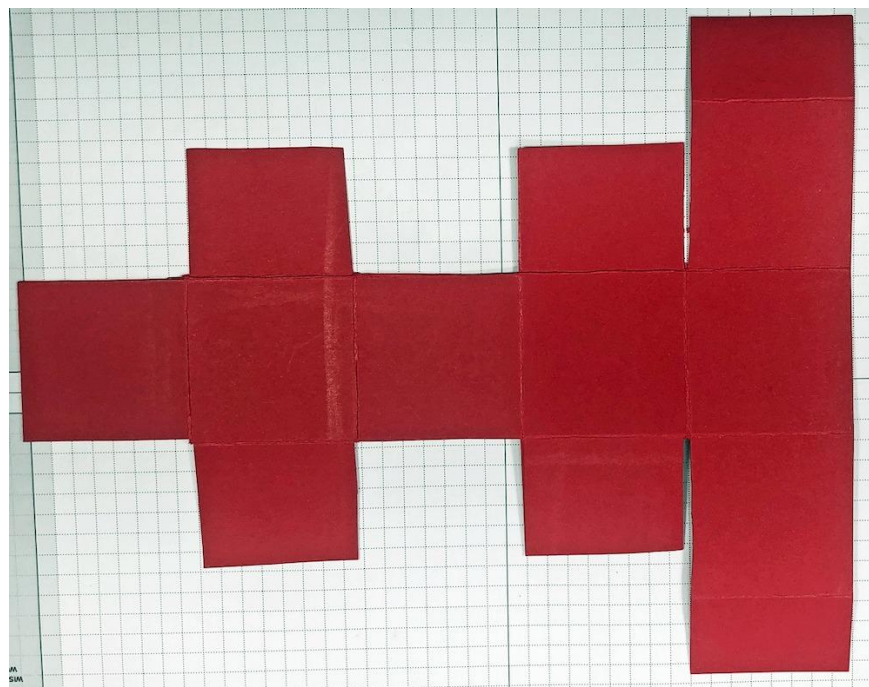
- Real Red Cardstock
 - 8" x 10"
- Whisper White Cardstock
 - 2" x 3"

Instructions:

1. Place Real Red Cardstock on Simply Scored Scoring Tool on long side and score at 2", 4", 6", and 8". Rotate to short side and score at 1", 3", 5", and 7". Fold and burnish on all score lines. Use diagram below to make the correct cuts.



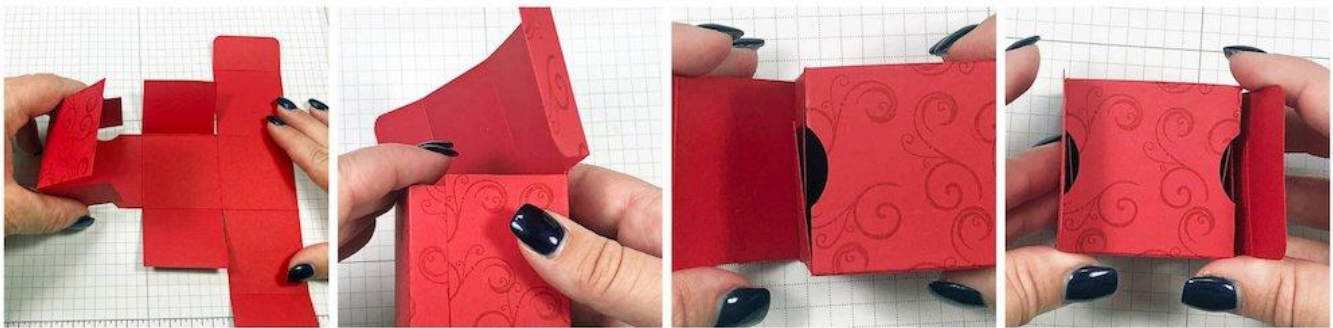
2. Once all cuts have been made, your box should look like the picture below.



3. Use the swirl stamp and Real Red Classic Stampin' Pad and stamp the entire piece of Cardstock.
4. Use 1" Circle Punch to make a small notch, both top and bottom, in the center panel.



5. Use Detailed Trio Punch to round corners on top and bottom of the longest panel.
6. Fold the box. See pictures below. No adhesive necessary.



7. Stamp sentiment on a Whisper White Cardstock using Real Red Classic Stampin' Pad.
8. Use VersaMark Ink to stamp border and sprinkle with Gold Stampin' Emboss Powder. Set powder with Heat Tool and use die cut from Merry Christmas Dies to cut out tag.
9. Wrap 10" of 3/8" Gold Metallic-Edge Ribbon around box and use Multipurpose Glue to adhere ends together. Trim off any excess ribbon.
10. Adhere label on top of box covering up where ribbon is glued together.
11. Tie a bow and adhere to top of label.

Joyful Season Box



Supply List:

- 149503 Lots of Cheer Cling Stamp Set
- 132708 Tuxedo Black Memento Ink Pad
- 147084 Real Red Classic Stampin' Pad
- 145058 Smoky Slate Stampin' Blends Markers Combo Pack
- 144577 Pumpkin Pie Dark Stampin' Blends Marker
- 144574 Old Olive Light Stampin' Blends Marker
- 147934 Real Red Dark Stampin' Blends Marker
- 100702 Old Olive 8-1/2" x 11" Cardstock
- 149616 Regals 6" x 6" (15.2 x 15.2 Cm) Designer Series Paper
- 100730 Whisper White Cardstock
- 146924 Red Rhinestones Basic Jewels
- 146925 Real Red 3/8" (1 Cm) Cotton Ribbon
- 148551 Stitched Rectangle Dies
- 141704 3" x 6" (7.6 x 15.2 Cm) Gusseted Cellophane Bags
- 144107 Take Your Pick
- 122334 Simply Scored
- 110755 Multipurpose Liquid Glue
- 138995 Tear & Tape Adhesive
- 104430 Stampin' Dimensionals

Project Details:

- Old Olive Cardstock
 - 6-1/2" x 9-1/2"
- Old Olive Designer Series Paper (Regals)
 - 2-3/4" x 4-3/4"
 - 4-3/4" x 1-1/4" (two pieces)
- Whisper White
 - 2" x 3-1/16" Stitched Rectangle
 - 3/4"x 1-5/8" Stitched Rectangle

Instructions:

1. Score the Old Olive Cardstock on the 9-1/2" side (landscape) at 3", 4-1/2", 7-1/2", and 9". Turn on 6-1/2" side (portrait) and score at 1-1/2".
2. Fold on score lines and cut by using picture below. Use Tear & Tape Adhesive and assemble box.



3. Add the Old Olive Designer Series Paper to the front of the box and both sides. Optional: Cut another piece of the Designer Series Paper (2-3/4" x 4-3/4") and add it to the back of the box.
4. Stamp Snowman image on Whisper White Cardstock using the Tuxedo Black Memento Ink Pad. Cut this image out with the Rectangle Stitched Dies (2" x 3-1/16"). Color the image with Stampin' Blends Markers. Color the hat with the Smoky Slate Stampin' Blends Markers Combo Pack. Color the nose with the Pumpkin Pie Dark Stampin' Blends Marker. Color the scarf with the Real Red Dark Stampin' Blends Marker. Color the present and the bow with the Old Olive Light Stampin' Blends Marker. Color the bow on present with the Real Red Dark Stampin' Blends Marker.
5. Add this layer to the front of the box using Stampin' Dimensionals. Add three Red Rhinestones Basic Jewels to the upper right corner using the Take Your Pick Tool.

- Stamp greeting with Real Red Classic Stampin' Pad on Whisper White Cardstock and cut it out with the Stitched Rectangle Dies. Use the Stitched Rectangle Dies and run it through again to make it smaller. Add the greeting to the bottom corner with Stampin' Dimensionals.



- Add a gift to the 3" x 6" Gusseted Cellophane Bags and tie the Real Red 3/8" Cotton Ribbon in a bow and then place bag inside box.

Christmas Cheer Gift Bag



Supply List:

- 149312 Ride With Me Stamp Set
- 132708 Memento Tuxedo Black Ink
- 119685 Cherry Cobbler Cardstock
- 100730 Whisper White Cardstock
- 149616 Regals 6" x 6" Designer Series Paper
- 146960 Silver Glimmer Paper
- 144213 Silver 3/8" Metallic Edge Ribbon
- 149626 Truck Ride Dies
- 141706 Layering Ovals Dies
- 104332 SNAIL Adhesive
- 138995 Tear & Tape Adhesive
- 103683 Mini Glue Dots
- 104430 Stampin' Dimensionals
- 147941 Basic Black Stampin' Blends Dark
- 144598 Cherry Cobbler Stampin' Blends Combo
- 144597 Old Olive Stampin' Blends Combo
- 145054 Smoky Slate Stampin' Blends Light
- 141897 Wink of Stella
- 102300 Bone Folder
- 103579 Paper Snips

Project Details:

- Whisper White Cardstock
 - 5-1/2" x 8"
 - Scrap for stamping & die-cutting Layering Oval
- Cherry Cobbler Cardstock
 - 1/2" x 7-1/2"
 - 2" x 3-1/2"
 - 1/2" x 2-3/8" (greeting layer)
- Silver Glimmer Paper
 - 1-3/4" x 3-1/2"
- 3/8" Silver Metallic Edge Ribbon
 - Two pieces cut at approx. 14"-16" (handles)
 - Approx. 10" for bow.
- Regals 6" x 6" Designer Series Paper
 - Scrap for cutting Layering Oval Die (scallop 3-1/2" size)

Instructions:

1. Score the Whisper White cardstock piece at $\frac{1}{2}$ ", 1", 3- $\frac{3}{4}$ ", 4 - $\frac{1}{4}$ ", 4- $\frac{3}{4}$ " and 7- $\frac{1}{2}$ " on the 8" side.
2. Turn with the 5- $\frac{1}{2}$ " side across the top and score at 1" and 5" (The 1" score line will be the bottom of your bag and the 5" side will be the top of your bag). Fold and burnish all score lines with your bone folder.



3. On the 7- $\frac{1}{2}$ " score line cut and remove the top square and bottom square. Add the Tear & Tape on the remaining tab as well as to one of the bottom flaps.
4. Cut up to the 1" bottom score line to form the tabs for bottom of bag (see photo).
5. When folding your bag, the $\frac{1}{2}$ " and the 4- $\frac{1}{4}$ " score lines will be your valley folds to form the sides of your bag (see photo).
6. Fold the top $\frac{1}{2}$ " score line forward and adhere the $\frac{1}{2}$ " Cherry Cobbler Cardstock with Tear & Tape to form a stronger & decorative border for adding your ribbon handles.
7. Assemble your gift bag making sure that the glue tab is in the back of the bag. When you close the bottom, the side tabs go in first, then the back tab and finally the front tab secures the bottom in a neat manner leaving all seams to the back of the bag.

8. Using a standard hole punch, punch the Cherry Cobbler edge about an inch and a half apart on both front and back of your bag. Feed the Silver Metallic Edge Ribbon through one of the holes from front and tie a knot at the end. The knot should be on the inside of your bag. Feed the opposite end through the front of the other hole tying a knot on the inside of bag. Repeat other side with the second piece of ribbon to form two handles.
9. Decorate your bag by adhering the Cherry Cobbler Cardstock to the Silver Glimmer paper. Adhere to the front of the bag with SNAIL Adhesive.
10. Cut out the Regals 6" x 6" designer paper and the Whisper White Cardstock with Layering Ovals Dies. Layer together using SNAIL Adhesive, then pop the ovals up on the bag with Stampin' Dimensionals.
11. On a scrap Whisper White Cardstock, stamp the truck and the tree with Memento Ink. Color in with the Stampin' Blends. Hand cut the truck and use the Truck Ride Dies to cut out the tree.



12. Stamp the Greeting "Wishing you loads of Christmas Cheer" BUT separate the greeting with Paper Snips to use the "Christmas Cheer" portion ONLY. Layer the greeting onto Cherry Cobbler cardstock (pop up on Stampin' Dimensionals).

13. Add a Silver 3/8" Metallic edge ribbon bow to the front with Mini Glue Dots.
14. Embellish with Wink of Stella on your Whisper White oval and truck image.
15. Finished gift bag measures 2-3/4" x 4" x 1".



Tall Snowman Box



Supply List:

- 149503 Lots of Cheer Stamp Set
- 132708 Memento Tuxedo Black Ink
- 147084 Real Red Classic Ink
- 149488 Garden Lane Designer Series Paper
- 140272 Whisper White Thick Cardstock
- 144213 3/8" Metallic-Edge Ribbon (Silver)
- 148547 Mossy Meadow Combo Stampin' Blends
- 147935 Real Red Combo Stampin' Blends
- 147942 Basic Black Combo Stampin' Blends
- 145054 Smoky Slate Light Stampin' Blend
- 103579 Paper Snips
- 104430 Stampin' Dimensionals
- 138995 Tear & Tape Adhesive

Project Details:

- Whisper White Thick Cardstock
 - Scrap for stamping and cutting snowman
 - 3/4" x 3" with tail end trimmed away
- Garden Lane Designer Series Paper
 - 6-5/8" x 10"

Instructions:

1. Stamp the snowman image onto scrap Whisper White, color with Blends Markers, and fussy cut around it.
2. Stamp sentiment in Real Red ink on smaller piece of Whisper White Cardstock and attach to the back of the snowman.
3. Score Garden Lane Designer Series Paper on the short side (6-5/8" side) at 1-1/2", 3", 4-1/2" and 6". Turn paper 90 degrees and score on the long side (10" side) at 3/4", 2-1/4" and 8-1/2".
4. Trim away bottom slender rectangle, top slender rectangle, and first largest rectangle on opposite side of tab piece that you've just trimmed away. Leave the other three top sections for the top of your box closure - middle piece being the longest with the 3/4" scored piece for closing. Trim away about halfway down on each of the side sections. Trim in on all four score lines at the bottom of the box to create the closure flaps.



5. Use Tear & Tape adhesive on the side tab and the bottom of the box to close.
6. Tie ribbon around the entire box and finish with a bow.
7. Attach snowman to the front with Dimensionals which will hold ribbon in place even when it is not tied.



Tags & More Gusseted Bags





Supply List:

- 147702 Merry Christmas To All Stamp Set
- 149652 Tags & More Accessory Kit
- 149609 Copper Dotted Treat Bags
- 102283 VersaMark Ink
- 141636 Copper Stampin' Emboss Powder
- 129053 Heat Tool
- 103579 Paper Snips
- 102300 Bone Folder
- 138995 Tear & Tape Adhesive
- 104430 Stampin' Dimensionals
- 103683 Mini Glue Dots
- Paper cutter with scoring blade
- Gift for the bags

Project Details:

- Copper Dotted Treat Bag (tall)
 - Score in at 1" on two sides and on the bottom. Then after forming bag, fold top over to form a 1" flap.
- Copper Dotted Treat Bag (short)
 - Score in at 3/4" on two sides and on the bottom. Then after forming bag, fold top over to form a 2" flap.

Instructions for each tag & bag:

1. Stamp and emboss one word or image at a time onto white label.
2. Mount onto colored tag using Dimensionals. To eliminate the “punched hole” look at the top of the colored tag, place a Dimensional directly on top of hole to prevent the punched circle from escaping. (Or if it’s gone already, be sure that the white label covers that area.)



3. After scoring the two sides and bottom of the Copper Dotted Treat Bag, use Bone Folder to reinforce the folds.
4. Place hand inside the bag and start forming the gusseted sides and bottom as shown.



5. Then secure the triangular corners flat against the sides using Tear & Tape Adhesive.
6. Add gift of some sort to bag, pinch and fold over the top of the bag, then tape shut with copper washi tape.



7. Attach layered tag with the copper clip.
8. Separate about 12 inches of two-toned twine into three strands: two white and one colored. Fold one of these strands in half and tie into a bow. Trim ends. Add bow to the clip with a Glue Dot.

