

# Stampin' Anonymous

## February 2019 Tutorials



Thank you for your purchase! I hope that you enjoy the fabulous “better than flat” projects that my fellow demonstrators and I have created for you this month. I appreciate your loyalty! Please remember that these special tutorials are for you, and I do kindly ask that you not share them. If you’d like to share an idea, please alter the project to make it your own and share it in your own words OR direct others to where they can access the tutorial from me. The demonstrators that made these tutorials put a lot of work into what they created. Your understanding is appreciated.

If I can answer any questions or help you with online ordering, please don’t hesitate to call me. I want to give you the BEST service I can!

Stamp Your Art Out!

**Marisa Alvarez**

Stampin' Up!® Demonstrator #2172282

847-922-6795

[marisa@kitchentablestamper.com](mailto:marisa@kitchentablestamper.com)

<https://www.kitchentablestamper.com>

Stampin' Anonymous Tutorials ©Stampin' UP!

# Hello Cupcake Bag



## **Supply List:**

- 149714 Hello Cupcake Photopolymer Stamp Set (Free level 1 Sale-a-Bration pick)
- 147115 Soft Suede Classic Stampin' Pad
- 147105 Balmy Blue Classic Stampin' Pad
- 146331 Tranquil Textures Designer Series Paper
- 100730 Whisper White Cardstock
- 138292 Banner Triple Punch
- 119861 1-1/4" Circle Punch
- 141705 Layering Circles Framelits Dies
- 150072 Call Me Cupcake Thinlits Dies – optional (avail. March 1-31)
- 148764 Whisper White 5/8" Flax Ribbon
- 144130 Gold Library Clips
- 148561 Gingham Gala Adhesive Backed Sequins
- 104430 Stampin' Dimensionals
- 103683 Mini Glue Dots
- 104332 Snail Adhesive
- 103579 Paper Snips
- 122334 Simply Scored Scoring Tool
- 143263 Big Shot Die Cut Machine
- 130658 Magnetic Platform

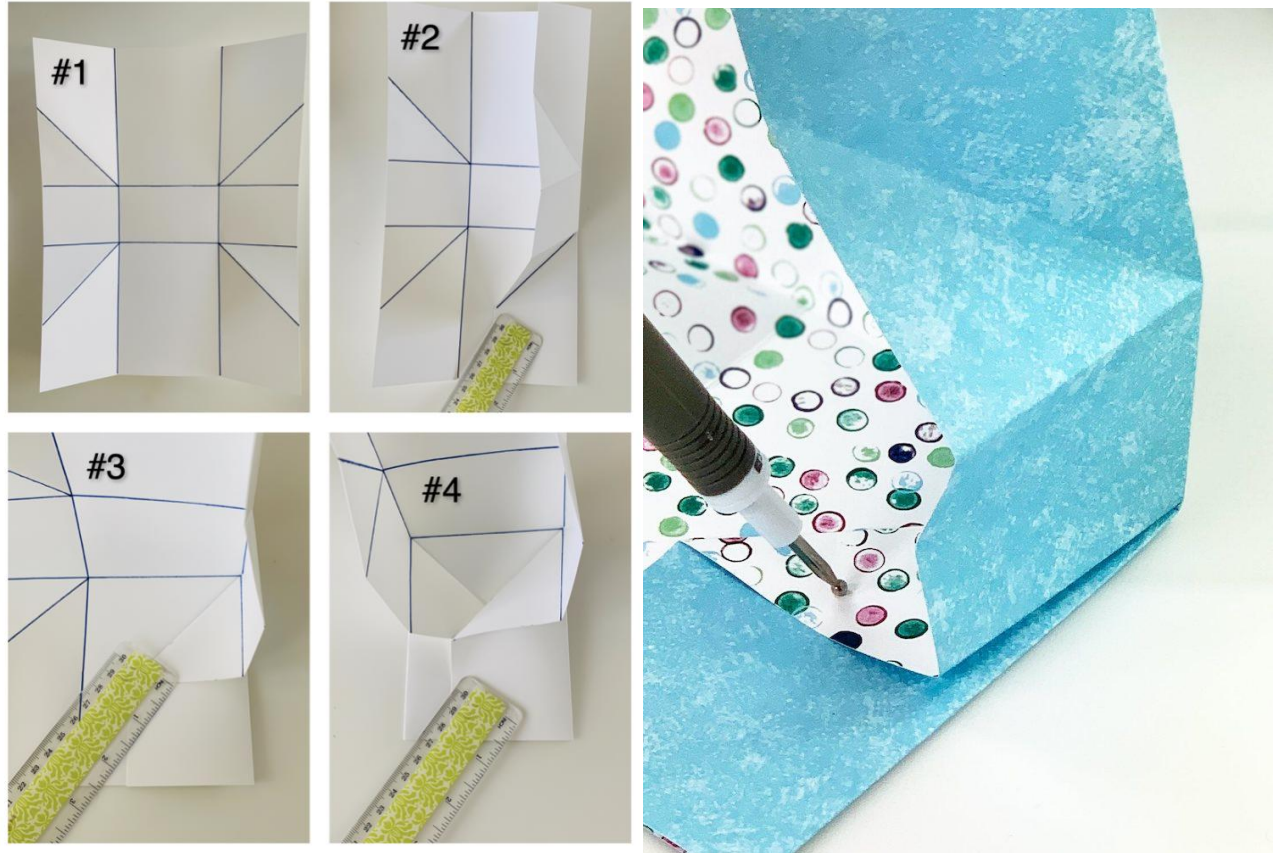
## **Project Details:**

- Tranquil Textures Designer Series Paper
  - 8-1/2" x 11"
  - 1-7/8" x 4-1/2"
- Whisper White Cardstock
  - 1" x 3" (banner)
  - 2-3/8" Circle
  - 1-1/4" Circle
  - Scraps for cupcake

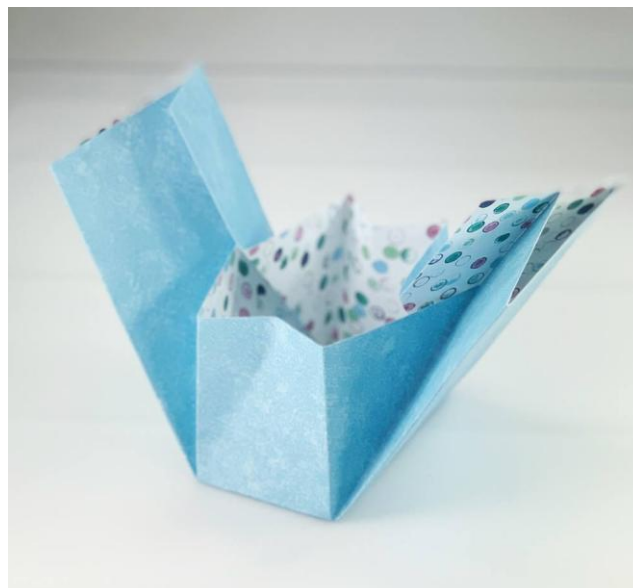
## **Instructions:**

1. Score the 8-1/2" x 11" piece of Designer Series Paper on the 8-1/2" side at 2-1/2" and 6".
2. Turn it on the 11" side and score it at 4-1/2" and 6-1/2".
3. Fold on score lines.

4. Lay the Designer Series Paper on the portrait side and fold the two sides in and then fold the bottom score line to the score line on the right side.
5. Repeat on the left side. Turn over and repeat on the other side (remember keep it on the portrait side).



6. Bring the two sides up together and hold it closed with a Gold Library Clip.



7. Flag the end of the Tranquil Textures Designer Series Paper that measures 1-7/8" x 4-1/2" with the Banner Triple Punch and add it to the front of bag (you can use Snail Adhesive to attach it to the front or just clip it).
8. Stamp "Sweet Wishes" on Whisper White Card Stock with Soft Suede Ink and cut out with the 1-1/4" Circle Punch.
9. Stamp same greeting in middle of 1" x 3" piece of Whisper White Card Stock and flag both ends with the Banner Triple Punch.
10. Cut out a 2-3/8" Whisper White circle using the Layering Circles Framelits with the Big Shot Die Cut Machine.
11. Stamp base of cupcake with Soft Suede Ink and icing with Balmy Blue on Whisper White card stock scraps and fussy cut them out with Paper Snips. Or...use the Call Me Cupcake Thinlits Dies to die-cut them.
12. Add 2-3/8" Whisper White circle to the front of bag with Snail Adhesive. Add base of cupcake to Whisper White circle using Snail Adhesive. Add icing with Stampin' Dimensionals, leaving some space in between the base of cupcake and the icing (the banner will hide the space). Add banner with Snail Adhesive and add greeting with Stampin' Dimensionals.
13. Attach Gingham Gala Adhesive Backed Sequins. Then add Basic Rhinestones on top of each Sequin.



# Lasting Lily Framed Art



## **Supply List:**

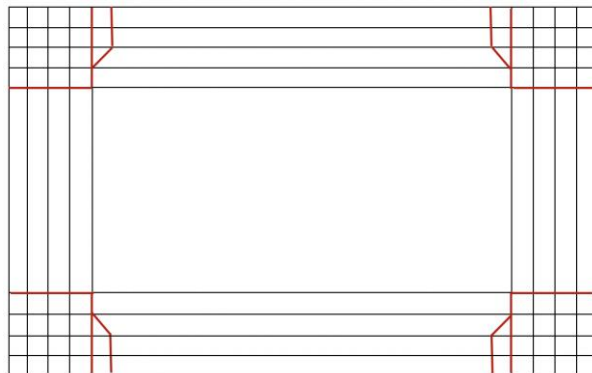
- 149717 Lasting Lily Stamp Set (Free level 2 Sale-a-Bration pick)
- 148580 Butterfly Gala Stamp Set
- 147110 Night Of Navy Stampin' Pad
- 105118 So Saffron Stampin' Pad
- 147095 Granny Apple Green Stampin' Pad
- 147277 Whisper White Stampin' Pad
- 148554 Gingham Gala Designer Series Paper
- 101856 Vellum Cardstock
- 120953 Crumb Cake Cardstock
- 100730 Whisper White Cardstock
- 148523 Butterfly Duet Punch
- 149623 Organdy Ribbon Combo Pack (Free level 1 Sale-a-Bration pick)
- 150071 Lily Framelits Dies – optional (avail. March 1-31)
- 143715 Pretty Label Punch
- 148012 Sprig Punch
- 104430 Dimensionals
- 138995 Tear & Tape Adhesive
- 103683 Glue Dots
- 110755 Multipurpose Glue
- 103579 Paper Snips Snips
- 116889 Stampin' Trimmer

## **Project Details:**

- Whisper White Cardstock
  - 3" x 5-1/2"
  - 2-3/4" x 1-3/4" to punch sentiment
  - 5-1/2" x 4-1/2" to stamp flowers and stems
  - 1" x 2" to stamp butterflies
- Gingham Gala Designer Series Paper
  - 6" x 3-1/2"
- Vellum Cardstock
  - 4" x 1-1/2" to punch sprigs
- Crumb Cake Cardstock
  - 8-1/2" x 11"

## **Instructions:**

1. Using a whole sheet of 8 ½" x 11" Crumb Cake cardstock score all four sides at ½", 1", 1 ½", and 2".
2. On the 11" sides of the cardstock make a 1" deep score line at 2 ½" and 8 ½".
3. Cut off the corners of the cardstock where the score lines overlap, this should be a 2" x 2" scrap.
4. Cut along each of the 1" deep score lines and once you reach the end of the line cut on a diagonal to connect the 1" score line to the corner of the score line immediately below it. Score lines are represented with black, cut lines are represented in red in the diagram below.



5. Fold each score line first inside out and then right side in.
6. Take a Whisper White ink pad and swipe it across the cardstock parallel to the score lines on each of the four sides.
7. Put a strip of Tear & Tape adhesive along the outer edge of each side.
8. Fold in the sides of the frame that have the diagonal cut using the score tool to burnish down the adhesive.
9. Fold the remaining sides tucking the straight edges under the diagonal edges, use glue dots to secure any unruly corners.
10. Using Stampin' Dimensionals stacked double high, adhere Gingham Gala Designer Series Paper.
11. Tie ribbon around Whisper White Cardstock and adhere to Gingham Gala Designer Series Paper also with double stacked Stampin' Dimensionals.
12. Stamp lilies with SoSaffron and Granny Apple Green and fussy cut (or... use the Lily Framelits to die-cut them), adhere to the Whisper White with single layer of Stampin' Dimensionals.
13. Stamp sentiment and butterflies with Night of Navy and punch out.
14. Adhere the label to the project with Stampin' Dimensionals and the butterflies to the label with Multipurpose Liquid Glue.

15. Punch Sprigs from Vellum Cardstock and adhere with a dab of Multipurpose Liquid Glue.

# Tea Together Gift Box



## **Supply List:**

- 148779 Tea Together Stamp Set
- 132708 Memento Tuxedo Black Ink
- 14700112" x 12" Brights Cardstock
- 100730 Whisper White Cardstock
- 149622 Botanical Butterfly Designer Series Paper (Free level 1 Sale-a-Bration pick)
- 143720 2-1/4" Circle Punch
- 149697 Tea Time Framelits Dies (Free level 2 Sale-a-Bration pick)
- 147275 Poppy Parade Stampin' Blends Combo Pack
- 147030 Pineapple Punch Stampin' Blends Dark
- 144578 Pumpkin Pie Stampin' Blends Light
- 144605 Pool Party Stampin' Blends Combo Pack
- 147274 Granny Apple Green Stampin' Blends Combo Pack
- 126889 Stampin' Trimmer
- 103579 Paper Snips
- 104430 Stampin' Dimensionals
- 138995 Tear & Tape Adhesive

## **Project Details:**

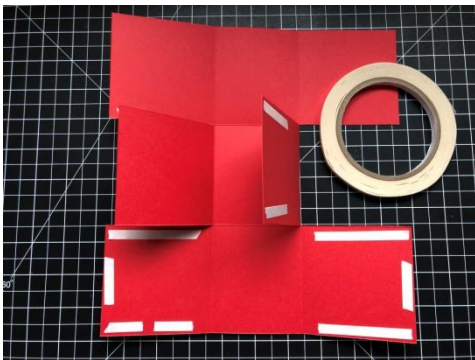
- Whisper White Cardstock
  - Scrap for coloring die-cutting tea and flowers
- Poppy Parade Cardstock
  - 9-1/4" x 9-3/4"
  - 3" x 4-1/4"
- Botanical Butterfly Designer Series Paper
  - Two 2-1/2" x 3"
  - Two 3" x 3"

## **Instructions:**

1. Score the cardstock at 3-1/4" and 6-1/2" on the 9-3/4" side (the longer side), turn and score at 3-1/4" and 6" on the 9-1/4" side (the short side). Trim on the score lines on the 9-3/4" side.



2. Add adhesive to the outside of the center tabs. And the inside of the front side tabs. Use a strong adhesive like Tear & Tape when creating a box.



3. Add layer pieces from Botanical Butterfly Designer Series Paper before assembling the box.



Stampin' UP!

4. Punch half a notch using the 2-1/4" Circle Punch from the center front panel before assembling. The front panel is the piece in between the two Tear & Tape adhesive pieces.
5. Remove all adhesive backing and fold back sides on to the center flaps where the adhesive was placed and then fold the front flaps over the already assembled pieces. This gives a nice smooth front of the box with no seams.
6. Stamp the tea pot on Whisper White Cardstock, stamp the small flower in the corner of the tea pot, use Memento Tuxedo Black ink.
7. Color the tea pot and flower. Color an extra flower to add to the front of the box.
8. Tip: Cover entire flower with Pineapple Punch Stampin' Blends first. Then layer the Pumpkin Pie, Light Poppy Parade and finally Dark Poppy Parade. Use care to not completely cover the previous color. The darkest color should be the closest to the center of the flower.
9. Add the tea pot and flowers to the front of the tea gift box.

NOTE: Finished box size is: 2-3/4" wide, 3-1/4" deep and 3-1/4" tall



# Home to Roost Wood Crate & 3" x 3" Cards





## **Supply List:**

- 149736 Home to Roost Stamp Set (Free level 1 Sale-a-Bration pick)
- 132708 Memento Tuxedo Black Ink
- 147085 Cajun Craze Ink
- 147083 Cherry Cobbler Ink
- 147116 Crumb Cake Ink
- 147110 Night of Navy Ink
- 147090 Old Olive Ink
- 147098 Pacific Point Ink
- 144177 Wood Textures 6" x 6" Designer Series Paper
- 146967 Neutrals 6" x 6" Designer Series Paper
- 100867 Night of Navy Cardstock
- 101650 Very Vanilla Cardstock

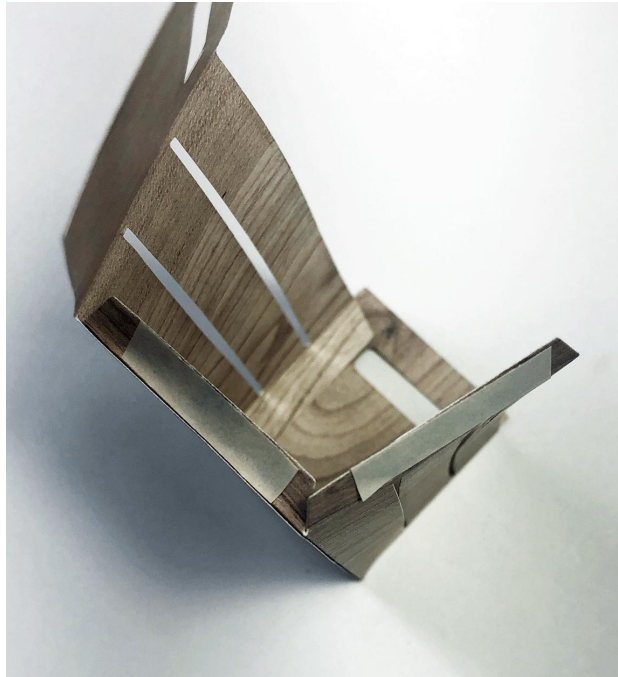
- 122959 Watercolor Paper
- 143263 Big Shot Die Cut Machine
- 143730 Wood Crate Framelits
- 145372 Stitched Shapes Framelits
- 148551 Rectangle Stitched Framelits
- 141705 Layering Circle Framelits
- 103954 Aqua Painter
- 144179 ¼" Copper Trim
- 133774 Envelope Punch Board
- 104430 Stampin' Dimensionals
- 138995 Tear & Tape Adhesive
- 103683 Mini Glue Dots
- Paper towel

## **Project Details:**

- Very Vanilla Cardstock
  - 3" x 6" (3 pieces)
  - 2" x 2" (3 pieces)
- Wood Textures 6" x 6" Designer Series Paper
  - 6" x 6" (2 pieces to create wood crate)
- Neutrals 6" x 6" Designer Series Paper
  - 5-1/4" x 5-1/4" (3 pieces)
- Night of Navy Cardstock
  - 3" x 3" (for the scallop circle)
- Watercolor Paper
  - 3" x 3" (for the circle)

## **Instructions:**

1. Use two pieces of same pattern Wood Textures 6" x 6" DSP to die cut the wood crate. Put together per die cut instructions using Tear & Tape Adhesive. See pictures below to help with placement of adhesive and how to put crate together.



2. Stamp rooster from Home to Roost stamp set using Memento Tuxedo Black ink on circle of Watercolor paper.
3. Create a “pool” of ink in the top lid of following ink: Cajun Craze, Cherry Cobbler, Night of Navy, Old Olive & Pacific Point. Then use Aqua Painter to color in the different parts of the rooster. Be sure to clean the Aqua Painter on a paper towel in between the different colors. Set aside to dry.

4. Use 2<sup>nd</sup> largest circle die from the Stitched Shapes Framelits Dies and cut out rooster image. Use 3<sup>rd</sup> largest scallop circle die and cut and Night of Navy Cardstock. Layer the rooster circle on top of scallop circle using Stampin' Dimensionals.
5. Adhere the layered rooster piece to front of wood crate using Tear & Tape Adhesive.
6. Score the 3" x 6" Very Vanilla Cardstock strips at 3". Fold and burnish with Bone Folder.
7. Stamp rooster image in the middle of each 3" x 3" card front using Crumb Cake ink.



8. Stamp sentiments on the 2" x 2" pieces of Very Vanilla Cardstock using the ink colors used to watercolor the rooster image.
9. Die cut two sentiment images using smallest oval and the rectangle from the Rectangle Stitched Framelits. Create a banner with the last sentiment by trimming off the top and bottom to create a thin strip. Then cut a flag into the left side.
10. Adhere the sentiments using Stampin' Dimensionals.

11. Tie three bows from the ¼” Copper Trim and adhere to stamped sentiment using Mini Glue Dots.
12. Use Envelope Punch Board and the three pieces of 5-1/4” x 5-1/4” Neutrals DSP to create envelopes following directions listed on the board.
13. Tuck the envelopes and cards inside the wood crate.

## **Triple Fun Fold card**



**Supply List:**

Stampin' Anonymous Tutorials ©Stampin' UP!

- 149725 So Hoppo Together Stamp Set (Free level 1 Sale-a-Bration pick)
- 149719 Part of My Story Stamp Set (Free level 1 Sale-a-Bration pick)
- 132708 Memento Black ink
- 149622 Botanical Butterfly Designer Paper (Free level 1 Sale-a-Bration pick)
- 121045 Basic Black Cardstock
- 100730 Whisper White Cardstock
- 144245 Lemon Lime Twist Cardstock
- 146990 Granny Apple Green Cardstock
- 147274 Granny Apple Green Stampin Blends Combo
- 147032 Flirty Flamingo Stampin' Blends Dark
- 146881 Highland Heather Stampin' Blends Light
- 144595 Pool Party Stampin' Blends Light
- 149623 Organdy Ribbon Comb Pack ~ Lemon Lime Twist (Free level 1 Sale-a-Bration pick)
- 133782 2" Circle Punch
- 143720 2-1/4" Circle Punch
- 141705 Layering Circles Framelits
- 102300 Bone Folder
- 104332 Snail Adhesive
- 126889 Stampin' Trimmer

## **Project Details:**

- Basic Black Cardstock
  - 4-1/4" x 5-1/2"
  - Scrap for punching a 2-1/4" circle
  - Scrap for layering the inside greeting
- Whisper White Cardstock
  - 4" x 5-1/4"
  - Scrap for punching 2" circle and stamping frog
  - Scrap for stamping greeting inside
- Lemon Lime Twist Cardstock
  - 4-1/4" x 5-1/4"
- Granny Apple Green Cardstock
  - Scrap for Laying Circle Framelits
- Botanical Butterfly designer paper
  - two at 1-7/8" x 3-3/4"
  - 3/4" x 3-3/4"

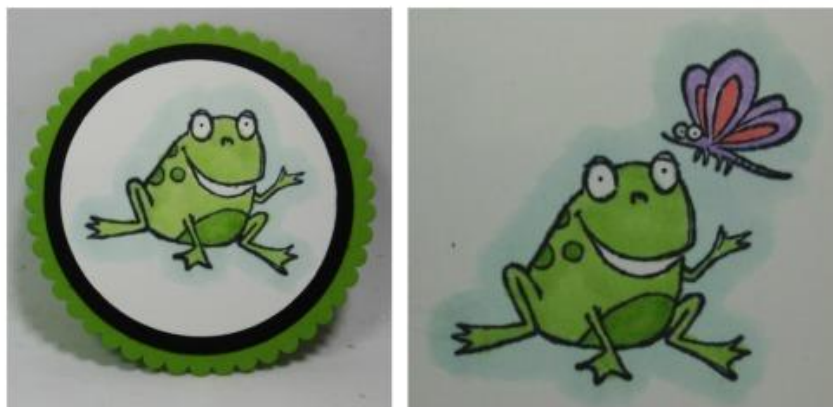
## **Instructions:**

1. Cut Lemon Lime Twist Cardstock at 4-1/4 x 5-1/4", with the 4-1/4" side across the top, score at 4". Turn with the 5-1/4" side across the top, cut two 2-1/8" strips, you will have one piece left measuring 1 x 4-1/4"
2. Fold on the 1/4" score lines and burnish with Bone Folder on all three pieces. Add your adhesive to the backside on the 1/4" tab. These will be your flaps to make your Triple Fun Fold card.
3. Using your Whisper White piece as your guide, line up and add your top and bottom flaps. The 2-1/8" flaps should line up with the top and bottom edge of the whisper white layer. Wrap the 1/4" score line to the right back side of the Whisper White panel.
4. There will be a 1" gap between the top and bottom flaps. Now adhere the center 1" x 4-1/4" flap but this time, wrap the 1/4" score line to the left back side of the Whisper White panel. All three flaps should be lined up with each other to create three separate flap folds that open opposite of each other.



5. Adhere the Botanical Butterfly Designer Series Paper to all the flaps. In the sample I hand cut the center flap down to 3" long so the frog would sit cute on the right-hand side of the card. You can adjust the length to what appeals to you, or keep the length as is.
6. Adhere the Whisper White card stock with flaps, centered, to the Basic Black card stock base.

7. Stamp the frog and butterfly from the So Hoppo Together Stamp Set on Whisper White underneath the bottom flap so it's hidden until the flap is lifted.
8. Stamp the greeting from Part of my Story Stamp Set under the top flap so the greeting is also hidden under the top flap. You can stamp the greeting on a scrap piece of Whisper White and hand cut, then layer on to Basic Black card stock as shown in the sample above.
9. Stamp the Frog on a scrap piece of Whisper White Cardstock and punch out with the 2" Circle Punch. Color the frog images with the Granny Apple Green Stampin' Blends.
10. Punch a piece of Basic Black Cardstock with the 2-1/4" circle punch. Cut out the Granny Apple Green Cardstock with the 2-1/2" scallop circle from the Layering Circle Framelits. Adhere together with the frog circle to the center front flap as shown.
11. Color the butterfly with the Flirty Flamingo Stampin' Blends and the Highland Heather Stampin' Blends. Optional: Pool Party Stampin' Blends to the outside edges of the images to make them pop (as shown in photos below).
12. Tie the Lemon Lime Twist Organdy ribbon (Sale-a-Bration) to the bottom flap.



# Part of My Story Treat Pocket





## **Supply List:**

- 149719 Part of My Story Stamp Set (Free level 1 Sale-a-Bration pick)
- 148537 Made to Bloom All-Inclusive Card Kit
- 147088 Shaded Spruce Classic Ink (optional)
- 126889 Stampin' Trimmer
- 141491 Classic Label Punch
- 146927 Share What You Love Artisan Pearls
- 103579 Paper Snips

- 102300 Bone Folder
- 126189 Paper-Piercing Tool (optional)
- 104332 SNAIL Adhesive
- 138995 Tear & Tape Adhesive
- Merci Chocolates

## **Project Details:**

- Card base from the kit
  - 2-3/4 x 8-1/2” (with score line running through center)

## **Instructions:**

1. Cut unfolded card base in half to create two pieces that are 2-3/4” x 8-1/2”. One card base will make two treat pouches. Keep pieces unfolded. Grab one of them for the remainder of the directions. Repeat the steps below for your second piece later if you wish to make another.
2. Add additional score lines. From one end score in at 3/8”, 2-3/8” and 2-3/4”.
3. Insert Classic Label Punch into this end so it goes just beyond the first 3/8” score line. Be sure it is centered, and punch to create the pocket.
4. Position this strip vertically in front of you (white side of the card base piece up) so that the punched pocket is at the top.
5. Stamp sentiment from the Part of My Story Stamp Set so it is centered between the punched area and the 2-3/8” score line with Blackberry Bliss ink that comes in the Made to Bloom kit (or Shaded Spruce ink).
6. Add Tear & Tape Adhesive above the punched area in the first 3/8” section. Then crease on the following score lines so the white side of the card base piece stays on the outside and the colored side stays in: 3/8”, 2-3/8” and 2-3/4”. **DONOT** fold on the 4-1/4” score line that was already there.



7. Tear off the Tear & Tape Adhesive backing and attach so that the edge meets up with the 4-1/4" score line. So even though we didn't fold on that score line, it had a purpose. 😊
8. Attach a portion of a floral die-cut from the kit using SNAIL. (One die-cut can embellish two treat pockets.) Use Paper Snips to trim off excess.



9. Add Share What You Love Artisan Pearls and the pearls from the kit to embellish even more.



10. Insert two Merci candies and give to someone who has touched your life. The sentiments in the kit could be used instead, but those in the Part of My Story Stamp Set have some unique, extra special messages perfect for these treat pouches.

