

Stampin' Anonymous

November 2019 Tutorials



Thank you for your purchase! I hope that you enjoy the fabulous “better than flat” projects that my fellow demonstrators and I have created for you this month. I appreciate your loyalty! Please remember that these special tutorials are for you, and I do kindly ask that you not share them. If you’d like to share an idea, please alter the project to make it your own and share it in your own words OR direct others to where they can access the tutorial from me. The demonstrators that made these tutorials put a lot of work into what they created. Your understanding is appreciated.

If I can answer any questions or help you with online ordering, please don’t hesitate to call me. I want to give you the BEST service I can!

Stamp Your Art Out!

Marisa Alvarez

Stampin' Up!® Demonstrator 2172282

847-922-6795

marisa@kitchentablestamper.com

<https://www.kitchentablestamper.com>

Stampin' Anonymous Tutorials ©Stampin' UP!

Wrapped in Plaid Booklet Card



Supply List:

- 149418 Perfectly Plaid Stamp Set
- 151143 Perfectly Plaid Bundle (stamp set and punch)
- 149596 Wrapped in Plaid Designer Series Paper
- 100730 Whisper White Cardstock
- 102482 Real Red Cardstock
- 100867 Night of Navy Cardstock
- 146981 Shaded Spruce Stampin' Pad
- 100867 Night of Navy Stampin' Pad
- 149521 Pine Tree Punch
- 150658 Frosted Frames Dies
- 148551 Stitched Rectangle Dies
- 152156 Gold Shimmer Ribbon
- 152155 Gold Glitter Enamel Dots
- 103579 Paper Snips
- 102300 Bone Folder
- 110755 Multipurpose Liquid Glue
- 104430 Dimensionals
- 104332 Snail Adhesive
- 152392 Paper Trimmer
- Die-cutting machine

Project Details:

- Wrapped in Plaid Designer Series Paper (green/blue plaid pattern)
 - 4-1/4" x 3-1/2"
 - 4-1/4" x 1-1/2"
- Wrapped in Plaid Designer Series Paper (green/red plaid pattern)
 - 4-1/4" x 1-1/2"
 - 4-1/4" x 1-1/4"
- Whisper White Cardstock
 - 4-1/4" x 9" scored at 5-1/2"
 - 4-1/4" x 5" scrap for die-cutting large Frosted Frames die piece
 - 2-3/4" x 3" scrap for die-cutting inside sentiment piece
 - Scrap for die-cutting snowflakes die
 - Scrap for die-cutting rectangle die for front sentiment piece

- Scraps for stamping and punching three trees
- Real Red Cardstock
 - 4-1/4" x 9" scored at 4-1/2"
- Night of Navy Cardstock
 - 2-5/8" x 2-7/8"
- Gold Shimmer Ribbon
 - 13"

Instructions:

1. Die-cut all your Whisper White pieces. Stamp the outside and inside sentiment pieces with Night of Navy ink.
2. Stamp the plaid pattern tree image with Shaded Spruce ink three times onto the Whisper Whitescraps (stamp without reinking to get lighter green if you wish). Then punch the trees out.
3. Start assembling your booklet card by placing the Real Red base inside the Whisper White base with the score lines meeting up. Adhere the 1-1/4" tall green/red plaid designer paper strip to the bottom inside of the Whisper White, then adhere the Real Red above making sure your booklet card can close.



4. Add the green/blue 1-1/2" tall designer paper strip and the inside Whisper Whitesentiment piece with SNAIL Adhesive. Add the two snowflakes using Multipurpose Liquid Glue.

5. Close the Real Red so you are now working on the middle section of the card. Add the trees with SNAIL making sure they will not show when the card is closed. Stamp “Ho HoHo” above in the white area using Shaded Spruce ink.
6. Adhere the 1-1/2” tall green/red plaid designer paper strip above the “Ho HoHo” using SNAIL so it lines up with the top of the Whisper White cardstock. Wrap the Gold Shimmer around and tie it in a knot in the front of the card. Shift the knot area off to the left.
7. With the card closed now, attach the large green/blue plaid designer paper piece with SNAIL.
8. Add the large Whisper White die-cut frame piece using Dimensionals being careful not to have the Dimensionals positioned too far down in the back (otherwise the will show when opening the card). Add the Night of Navy piece with SNAIL, and then shift the knot of the ribbon if necessary.
9. Add the “Merry Christmas” piece with Dimensionals.
10. Then add the Gold Glitter Enamel Dots to all the layers of the card.



Birds of a Feather Holiday Gift Bag



Supply List:

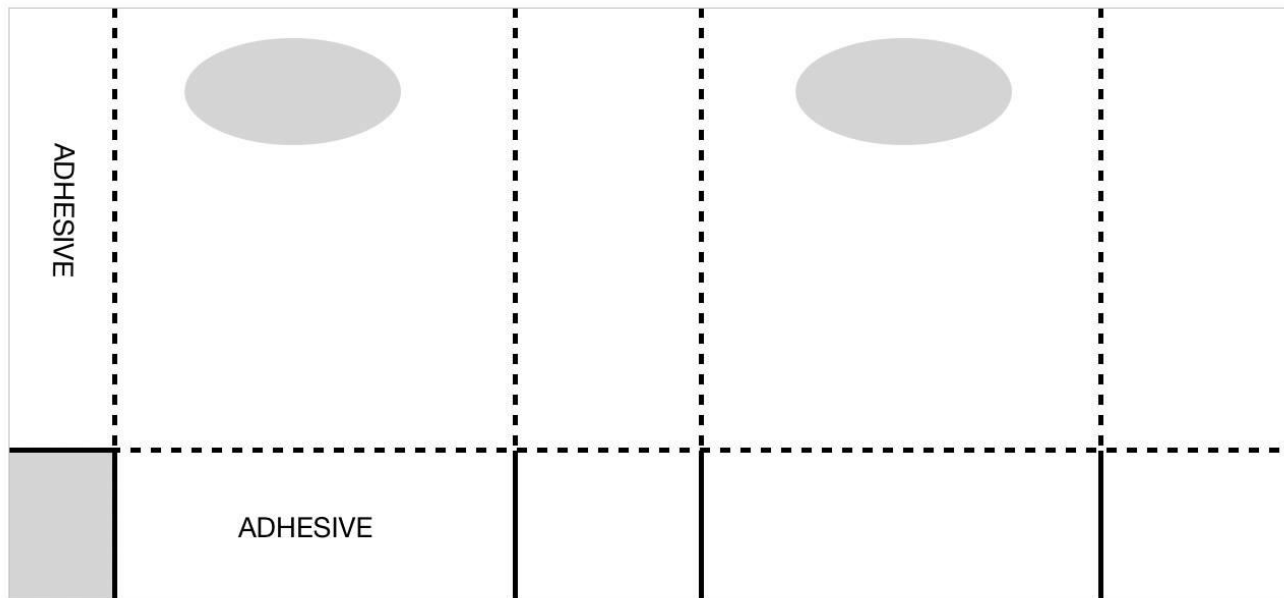
- 150571 Birds Of A Feather Stamp Set
- 132708 Tuxedo Black Memento Ink Pad
- 147084 Real Red Classic Stampin' Pad
- 144595 Pool Party Light Stampin' Blends Marker
- 144578 Pumpkin Pie Light Stampin' Blends Marker
- 147934 Real Red Dark Stampin' Blends Marker
- 150393 Let It Snow Specialty Designer Series Paper
- 102482 Real Red Cardstock
- 100730 Whisper White Cardstock
- 150435 Real Red 1" Ruched Ribbon
- 145372 Stitched Shapes Dies
- 141706 Layering Ovals Dies
- 141708 Layering Squares Dies
- 146321 Twinkle Builder Punch
- 150691 Snowfall Accents Puff Paint
- 146924 Red Rhinestones Basic Jewels
- 141897 Clear Wink of Stella Glitter Brush
- 129053 Heat Tool
- 144107 Take Your Pick Tool
- 104430 Stampin' Dimensionals
- 110755 Multipurpose Liquid Glue
- 122334 Simply Scored

Project Details:

- Let It Snow Specialty Designer Series Paper
 - 6" x 12"
- Real Red Cardstock
 - 2-1/4" Scallop Square
 - Scrap for Twinkle Builder Punch
 - Scrap for die cutting
- Whisper White Cardstock
 - 1-3/8" Stitched Circle
 - 2-1/8" Stitched Square
 - 2-1/2" Scallop Square

Instructions:

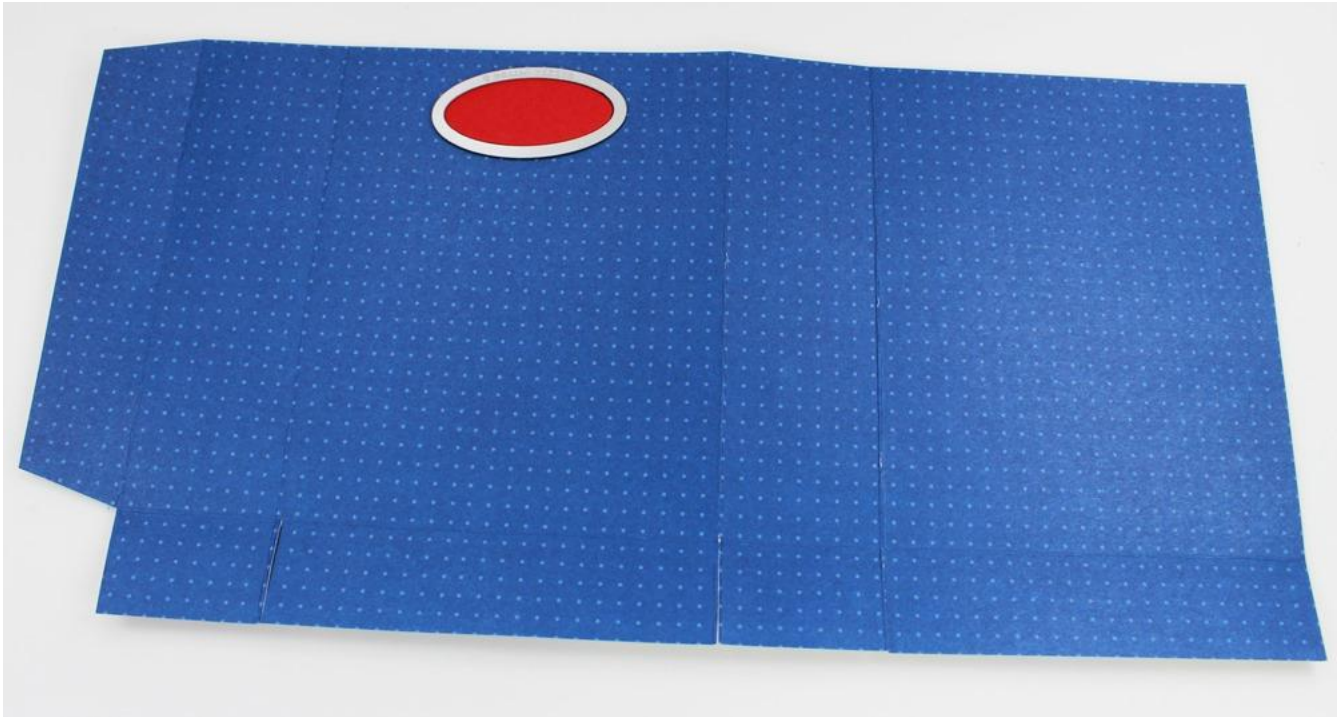
1. Place the 6" x 12" piece of Let It Snow Specialty Designer Series Paper on your scoring tool and score on the landscape side (12" side) at 4", 5-1/2", 9-1/2", 11". Turn and score on portrait side (6" side) at 1".
2. Fold on score lines and burnish with a Bone Folder. Cut according to the diagram below.



Cut on Solid Lines - Score on Dotted Lines - Remove Shaded

3. Using a scrap piece of Real Red Cardstock cut out an oval using the smallest oval die from the Layering Ovals Die Set. Place that oval on top of the designer series paper where you want the handle (just a drop of adhesive to hold it in place) and die cut it. Repeat that process for the back of the bag. Assemble bag using Tear & Tape.
4. Tie the Real Red Ruched Ribbon on the handle.
5. Stamp the greeting with a Real Red Stamp Pad on Whisper White Cardstock and cut it out with the Stitched Shapes Dies.
6. Cut out a Real Red scallop square (2-1/4") with the Layering Squares Dies. Cut out a Whisper White scallop square (2-1/4") with the Layering Square Dies.
7. Stamp bird image with Memento Ink on Whisper White Cardstock and cut out with the Stitched Shapes Dies.
8. Color the bird with the Light Pool Party Stampin' Blends Marker. Color the beak with the Light Pumpkin Pie Stampin' Blends Marker. Color the hat with the Dark Real Red Stampin' Blends Marker.

9. Add the image to the Real Red scallop square with liquid glue and then add it to the Whisper White scallop square using the same adhesive.
10. Cut out a Real Red star using the Twinkle Builder Punch and adhere it to the image with liquid glue.



11. Add the Snowfall Accents Puff Paint to the hat and heat set it with a Heat Tool. Once it's cooled down apply the Clear Wink of Stella.
12. Embellish the bird panel with three Real Red Rhinestones on the upper left corner. Then adhere both the bird panel and sentiment to the front of the bag with Stampin' Dimensionals.

Sugar Sprinkled Candy Box



Supply List:

- 150513 Itty Bitty Christmas Stamp Set
- 147050 Poppy Parade Classic Stampin' Pad
- 147001 Brights 12" x 12" Cardstock
- 150393 Let It Snow Specialty Designer Series Paper
- 121045 Basic Black Cardstock
- 140272 Whisper White Thick Cardstock
- 150446 Seaside Spray ¼" Metallic Ribbon
- 149638 Stitched Nested Labels Dies
- 150457 Holiday Rhinestone Basic Jewels
- 119868 1" Circle Punch
- 102300 Bone Folder
- 103579 Paper Snips
- 104332 Snail Adhesive
- 138995 Tear & Tape Adhesive

Project Details:

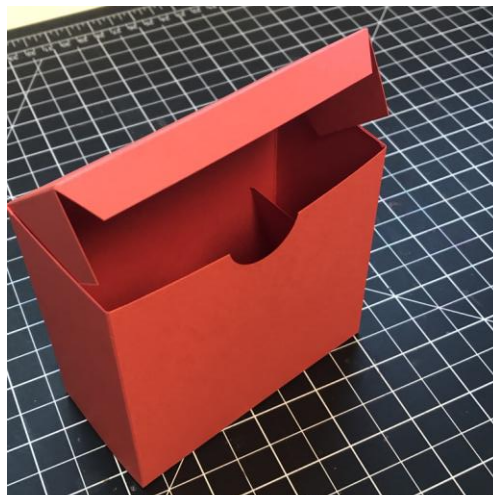
- Whisper White Thick Cardstock
 - Scrap for cutting smallest Stitched Nested Label Die
- Basic Black Cardstock
 - Scrap for cutting second smallest Stitched Nested Label Die
- Poppy Parade Cardstock
 - 8" x 12"
- Let It Snow Specialty Designer Series Paper
 - 2" x 12"

Instructions:

1. Score the Poppy Parade Cardstock on the portrait (8") side at 2" and 6". Turn the cardstock and score at 3-3/4", 5-3/4", 9-1/2" and 11-1/2" on the landscape (12") side.
2. Trim on score lines as shown in the photo.



3. Use Tear & Tape Adhesive on the very front inside panels of the box base. The outside panels will fold up and meet the back two panels to close the box. Punch half of a 1" circle punch out of the front of the box.



4. Use Let It Snow Specialty Designer Series Paper to wrap the box, leave the seam in the front of the box, it will be covered with the Stitched Nested Labels.
5. Use the Seaside Spray Ribbon and wrap it around the box and tie a bow to the right side of the box.
6. Adhere the Basic Black Stitched Nested Label over the gap in the designer series paper using Stampin' Dimensionals.
7. Stamp the sentiment in Poppy Parade Ink on the Thick Whisper White Stitched Nested Label and add it on top of the black one using Stampin' Dimensionals.
8. Use the Holiday Rhinestone Basic Jewels to add some bling to the box.

2" x 2" Treat Two Pack Tote



Supply List:

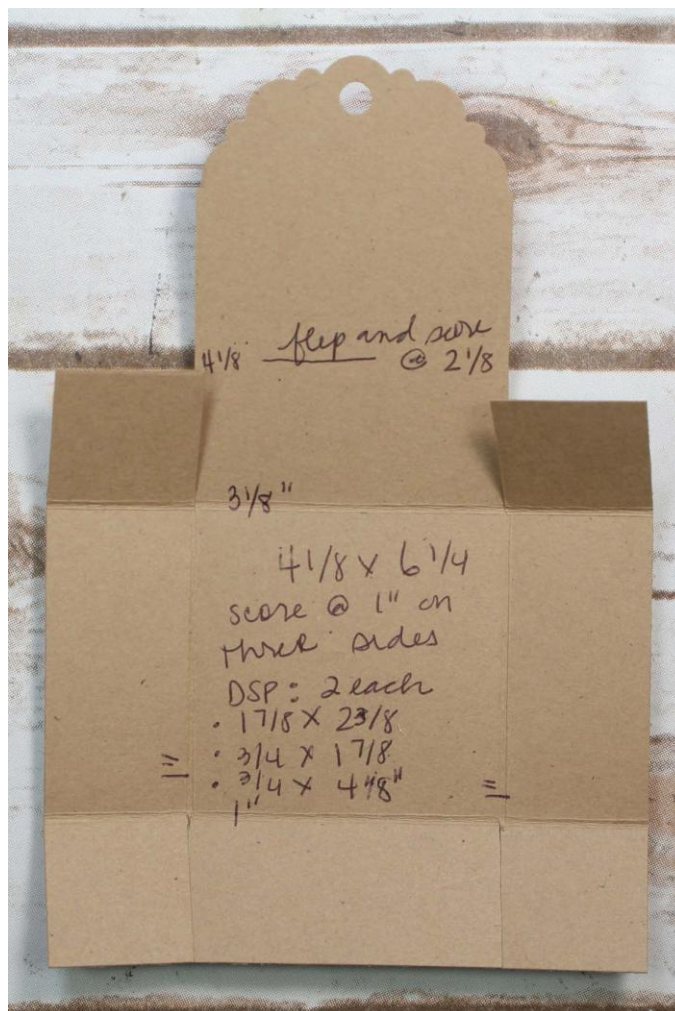
- 153042 Tags TagsTags Bundle
- 132708 Memento Tuxedo Black Ink Pad
- 147935 Real Red Stampin' Blends Combo Pack
- 147282 Call Me Clover Stampin' Blends Combo Pack
- 140272 Thick Whisper White Cardstock
- 100730 Whisper White Cardstock
- 150393 Let It Snow Specialty Designer Series Paper
- 141699 Clear Tiny Treat Boxes
- 146320 Detailed Trio Punch
- 149518 Delightful Tag Topper Punch
- 144220 Rhinestone Basic Jewels
- 146925 Real Red 3/8" Cotton Ribbon
- 138995 Tear & Tape Adhesive
- 110755 Multipurpose Liquid Glue
- 122334 Simply Scored Tool
- 103579 Paper Snips
- 102300 Bone Folder
- 144107 Take Your Pick Tool

Project Details:

- Thick Whisper White Cardstock
 - 4-1/8" x 6-1/4" -Two Pieces
- Whisper White Cardstock
 - Scrap for die-cutting tag
- Let It Snow Specialty Designer Series Paper
 - Coastal Cabana with Real Red Snowflakes
 - 1-7/8" x 2-3/8" (Two Pieces)
 - Real Red and White Stripe
 - 3/4" x 1-7/8" (Two Pieces)
 - 3/4" x 4-1/8" (Two Pieces)

Instructions:

1. Score both pieces of Thick Whisper White Cardstock at 1" on three sides.
2. Put the piece back in the Simply Scored Tool on the 6-1/4" side with the 1" score at the left at one inch. Score all the way down at 3-1/8" and score to the first intersecting score at 4-1/8". Rotate the box piece 180 degrees and score at 2-1/8" to the first intersecting score line.
3. Work the score lines with a Bone Folder and cut the box pieces as indicated in the template photo below to make tabs for gluing.
4. Punch the longest panel with the Delightful Tag Topper Punch.
5. Repeat so you have two pieces like this.



6. Add Tear & Tape Adhesive to each of the back of each of the tabs and fold up the boxes. Using the same adhesive, glue the boxes together back to back of the tall side that was punched with the Delightful Tag Topper.
7. Using Multipurpose Liquid Glue, adhere the Real Red stripe Let It Snow Designer Series Papers to the short and long sides of the tote.

8. Round the corners of the Coastal Cabana with snowflakes Let It Snow Designer Series paper and adhere to the inside of the tote on each side of the Delightful Tag Topper Punched panel.
9. Fold, fill and close two Clear Tiny Treat Boxes and set them in the tote.
10. Stamp the Elf tag from Tags TagsTags on the Whisper White scrap and die cut with the Trio of Tags Die. Color with Real Red and Call Me Clover Stampin' Blends.
11. Thread Real Red Cotton Ribbon through the hole punched with the Delightful Tag Topper and then thread through the stamped and colored tag. Tie a pretty bow.
12. Embellish with Rhinestone Basic Jewels.

Tri-Fold Flap card



Supply List:

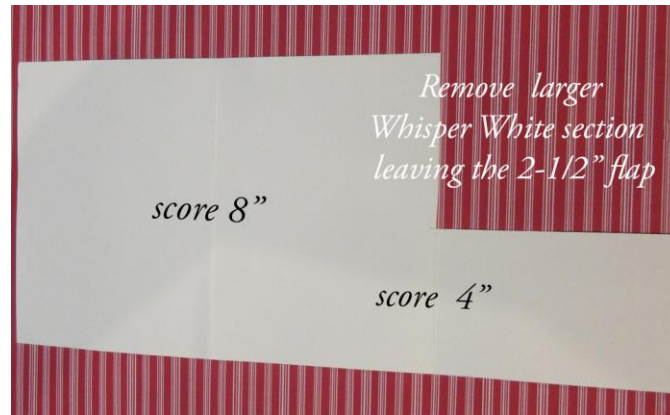
- 150497 Christmas Crowd Stamp Set
- 132708 Memento Tuxedo Black Ink
- 147084 Real Red Classic Ink
- 102482 Real Red Cardstock
- 124302 Whisper White 12" x 12" Cardstock
- 150427 Real Red Glimmer Paper
- 150393 Let It Snow Specialty Designer Paper
- 148551 Stitched Rectangles Dies
- 144598 Stampin' Blends Cherry Cobbler Combo
- 144607 Stampin' Blends Bronze
- 148544 Stampin' Blends Balmy Blue Combo
- 147940 Stampin' Blends Basic Black Light
- 144601 Stampin' Blends Crumb Cake Combo
- 144585 Stampin' Blends Daffodil Delight Dark
- 147274 Stampin' Blends Granny Apple Green Combo
- 144606 Stampin' Blends Ivory
- 144595 Stampin' Blends Pool Party Light
- 147275 Stampin' Blends Poppy Parade Combo
- 144577 Stampin' Blends Pumpkin Pie Light
- 147935 Stampin' Blends Real Red Combo
- 104430 Stampin' Dimensionals
- 104332 Snail Adhesive
- 138308 Fine -Tip Glue Pen
- 133751 Dazzling Diamonds Glitter

Project Details:

- Whisper White Cardstock
 - 5-1/2" x 12"
 - 3-1/4" x 4-1/2" (larger for die cutting)
- Real Red Cardstock
 - Two 2-3/8" x 3 -7/8"
- Real Red Glimmer Paper
 - 3-1/2" x 5" (larger for die cutting)
- Let It Snow Specialty Designer paper
 - 3-1/2" x 3-7/8"

Instructions:

1. Using the trimmer score 5-1/2" x 12" Whisper White Cardstock a 4" and 8" on the 12" side.
2. Turn card stock on the 5-1/2" side, line up edge at 2-1/2" and cut down to the first score line. Using scissors or your paper trimmer, remove the larger section of the piece you just cut, keeping the 2-1/2" flap as shown in photo below.



3. Stamp the Christmas Crowd onto the Whisper White 3-1/4" x 4-1/2" piece. Die cut image with the Stitched Rectangle dies after you color with the Stampin' Blends. The finished piece after die cutting will measure 3" x 4-3/8"
4. Cut Real Red Glimmer Paper with the Stitched Rectangle Dies, finished size will be 3-3/8" x 4-3/4". Layer behind the Christmas Crowd image with Stampin' Dimensionals.
5. Adhere the Let It Snow Designer paper on the front panel of Whisper White cardstock. Adhere the Real Red Cardstock piece to the 2-1/2" flap front and also below the Let it Snow designer Paper.



6. Close up your card with the small flap wrapping to the front. Position your Christmas Crowd image to the right of your flap. This will serve as a closure to your card.

7. Pop up the Christmas Crowd image with Stampin' Dimensional only on the back right, shown in photo below, so the flap can slide under the Christmas Crowd image.



8. Open the Whisper White base and stamp the greetings. Add both greetings to one block to allow easy placement, see the photo below.



9. Stamp smaller greeting on the flap. Stamp random snowflakes around the greetings with Real Red Classic ink.
10. Embellish with Dazzling Diamonds Glitter using a Fine Tip Glue Pen.

Christmas Tags Book



Supply List:

- 152337 Snowman Season Bundle
- 150460 Tiny Keepsakes Stamp Set
- 147097 Coastal Cabana Classic Stampin' Pad
- 147084 Real Red Classic Stampin' Pad
- 147088 Shaded Spruce Classic Stampin' Pad
- 132708 Memento Tuxedo Black Ink
- 150393 Let It Snow Specialty Designer Series Paper
- 150427 Real Red Glimmer Paper
- 146968 Blueberry Bushel Cardstock
- 119686 Early Espresso Cardstock
- 102482 Real Red Cardstock
- 146981 Shaded Spruce Cardstock
- 100730 Whisper White Cardstock
- 150426 Real Red 1/8" Curly Ribbon
- 144213 3/8" Silver Metallic-Edge Ribbon
- 146912 5/8" Polka Dot Tulle Ribbon
- 150425 Let It Snow Embellishment Kit
- 150645 Winter Knit 3D Embossing Folder
- 119868 1" Circle Punch
- 146138 1-1/8" Scallop Circle Punch
- 146320 Detailed Trio Punch
- 141705 Layering Circle Dies
- 141708 Layering Square Dies
- 145372 Stitched Shapes Dies
- 144527 Dark Pumpkin Pie Stampin' Blend
- 141704 3" x 6" Gusseted Cellophane Bags
- 110755 Multipurpose Liquid Glue
- 104430 Stampin' Dimensionals
- 138995 Tear & Tape Adhesive
- Hole Punch
- Book Ring
- Eyelet

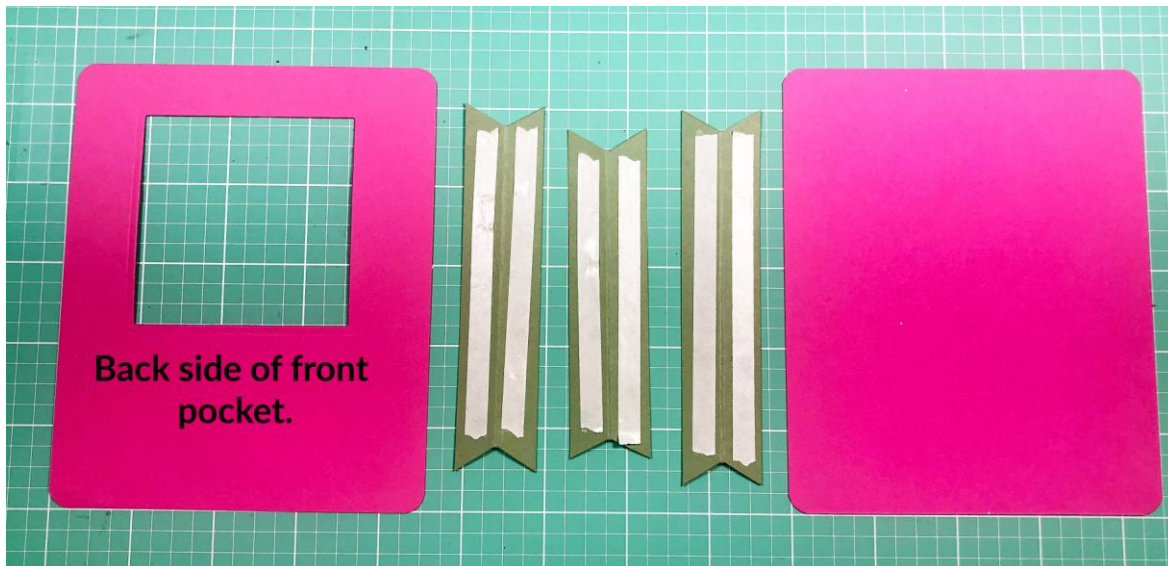
Project Details:

- Blueberry Bushel Cardstock
 - 4" x 4" for die-cutting scallop square
 - 3" x 3" to create bag topper
- Early Espresso Cardstock
 - Scrap piece for snowman's arms
- Real Red Cardstock
 - 4" x 4" for die-cutting scallop square
 - 3" x 3" to create bag topper
- Shaded Spruce Cardstock
 - 4" x 4" for die-cutting scallop square
 - 3" x 3" to create bag topper
- Whisper White Cardstock
 - 4" x 4" for die-cutting circle
 - 3" x 5"
- Real Red Glimmer Paper
 - 4" x 4" for die-cutting scallop circle
- Let It Snow Specialty Designer Series Paper
 - 4-1/2" x 5-1/2" – choose four designs, two pieces each
 - 1" x 5" – for binding strips (three strips per pocket)
 - Scrap pieces for small scallop circle punch

Instructions:

1. Choose the order of your Let It Snow Specialty Designer Paper pieces from front to back of tag book. The front and back cover should be the same design.
2. Place the largest plain square die on one of the Let It Snow Specialty Designer Series Papers for each pocket. Lay the die towards the top of the paper making sure it's even on both sides and run through die cut machine. Repeat for the other two pieces.
3. Nest the largest scallop square and the square die from step 3 together. Run through die cut machine to create a scallop square frame from Blueberry Bushel, Real Red, and Shaded Spruce Cardstocks.
4. Adhere scallop square frame using Multipurpose Liquid Glue to each of the three pieces of Let It Snow Specialty Designer Series Paper. Should fit snugly around square cut out.
5. Die cut largest stitched circle from Whisper White Cardstock. Emboss the circle using Winter Knit 3D Embossing Folder.

6. Die cut largest scallop circle using Real Red Glimmer Paper. Adhere stitched circle to scallop circle.
7. Emboss each piece of 3" x 3" cardstock using Winter Knit 3D Embossing Folder. Score at 1-1/2", fold and burnish with Bone Folder and set aside.
8. Use Detailed Trio Punch to corner round each piece of Let It Snow Specialty Designer Series Paper.
9. To create the pockets, use matching pieces of Let It Snow Specialty Designer Series Paper. The scallop frame will be the front. Make sure the same design is on the front and back.
10. Score each binding strip at 1/2". Fold and burnish with Bone Folder. Cut each end on an angle. Place Tear & Tape on both sides of strips. Remove backing paper from one side and place binding strip at the edge of paper making sure it doesn't overhang the side. Repeat for other side and bottom. Use pictures below for help.



11. Remove backing paper on the other side of binding strip and carefully place the front piece on top of back piece to create the pocket.



12. Stamp snowman on Whisper White Cardstock using Memento Tuxedo Black ink and punch out using Snowman Builder Punch. Punch out arms with Early Espresso Cardstock.
13. Color in carrot nose using Dark Pumpkin Pie Stampin' Blend.
14. Adhere snowman arms using liquid glue. Do the same for adhering hat, mittens, and scarf from Let It Snow Embellishment Kit and adhere to front cover with Stampin' Dimensionals.
15. Use Tiny Keepsakes Stamp Set and stamp three designs or sentiments of your choice on Whisper White Cardstock. Punch out using 1" Circle Punch. Use scraps of Let It Snow Specialty Designer Series Paper and punch out three 1-1/8" scallop circles. Adhere stamped circle to scallop circle with Stampin' Dimensionals.
16. Place Christmas tags or fun holiday embellishments into three 3" x 6" Gusseted Cellophane Bags. Fold over and place bag topper on each bag. Staple to keep bag closed. Place scallop circle on top of each staple using Tear & Tape Adhesive.
17. Punch a hole in top left corner of pockets and front and back cover. Set an eyelet in the front and back cover. Use a book ring to create the tag book.

18. Slip cello bag into each pocket.

19. Tie some Real Red 1/8" Curly, Silver Metallic-Edge and Polka Dot Tulle ribbons on book ring for added pizzazz.

