

# Stampin' Anonymous

## September 2019 Tutorials



Thank you for your purchase! I hope that you enjoy the fabulous “better than flat” projects that my fellow demonstrators and I have created for you this month. I appreciate your loyalty! Please remember that these special tutorials are for you, and I do kindly ask that you not share them. If you’d like to share an idea, please alter the project to make it your own and share it in your own words OR direct others to where they can access the tutorial from me. The demonstrators that made these tutorials put a lot of work into what they created. Your understanding is appreciated.

If I can answer any questions or help you with online ordering, please don’t hesitate to call me. I want to give you the BEST service I can!

Stamp Your Art Out!

**Marisa Alvarez**

Stampin' Up!® Demonstrator 2172282

847-922-6795

[marisa@kitchentablestamper.com](mailto:marisa@kitchentablestamper.com)

<https://www.kitchentablestamper.com>

Stampin' Anonymous Tutorials ©Stampin' UP!

# Going Batty Easel Card



## Supply List:

- 150544 Spooktacular Bash Stamp Set
- 132708 Memento Tuxedo Black Ink
- 121045 Basic Black Cardstock
- 100730 Whisper White Cardstock

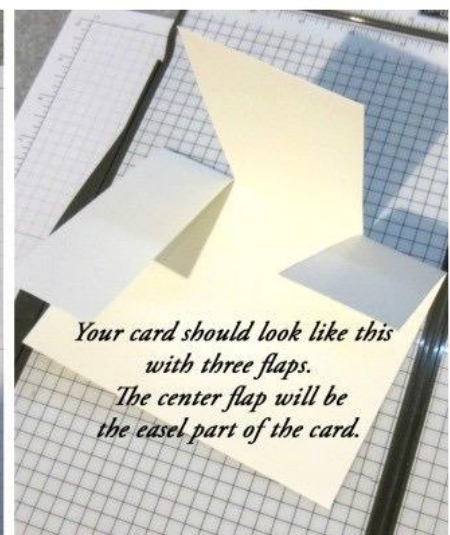
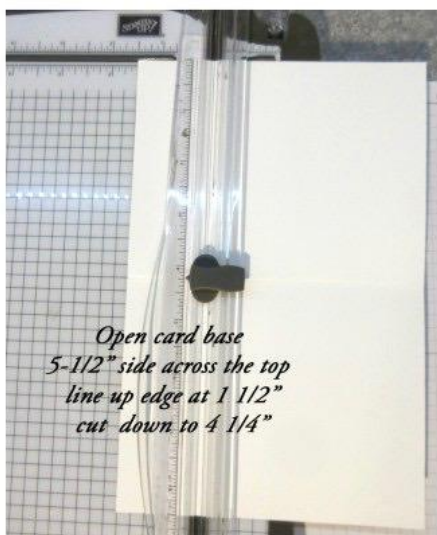
- 150447 Monster Bash Designer Series Paper
- 150664 Ornate Frames Dies
- 150670 Every Season Punch Pack
- 150448 Monster Bash Enamel Shapes
- 150893 Black Stampin' Dimensionals Combo Pack

## **Project Details:**

- Basic Black Cardstock
  - 5-1/2" x 8-1/2"
  - Scraps for die-cutting & punching
- Whisper White Cardstock
  - 3" x 4 1/4"
  - Scraps for stamping & die-cutting
- Monster Bash Designer Paper
  - 1-1/4" x 4" (two pieces)
  - 1-7/8" x 2-1/4" (two pieces)

## **Instructions:**

1. Score Basic Black Cardstock in half at 4-1/4".
2. With the 5-1/2" side across the top of paper trimmer, line edge up at 1-1/2" then cut down to the 4-1/4" score line. Slide over to 4" mark and cut down to the 4-1/4" score line. The images below show these cuts but on lighter cardstock so it's easier to see. You will do these cuts on your Basic Black Cardstock.



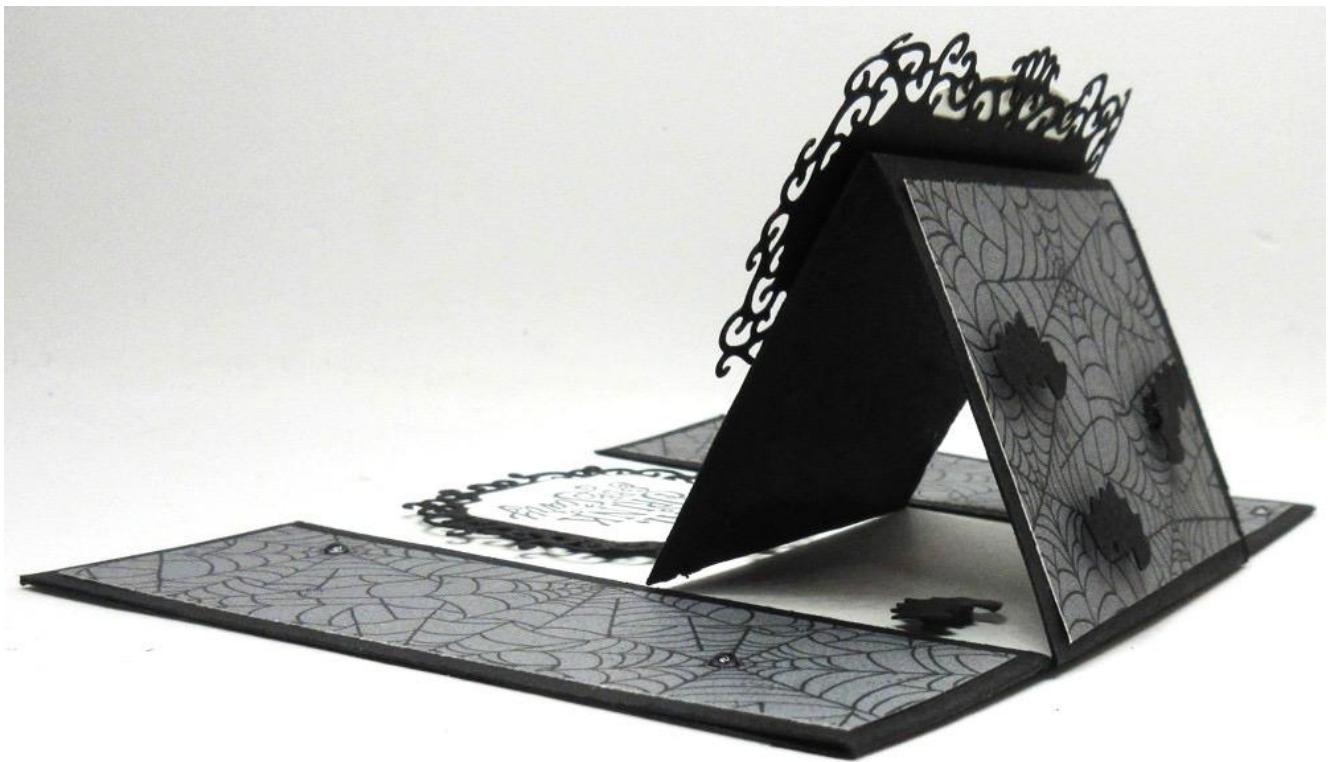
3. Adhere the Whisper White piece on the base (the side without cuts). Line up between the cut lines. There should be a tiny bit of overhang.
4. Adhere the two outside Basic Black flaps down on either side of the Whisper White Cardstock.
5. Fold the center flap in half, (or score at 2-1/8") this will be your easel section and will **NOT** be adhered down.
6. Adhere all Monster Bash Designer Paper (shown in photo below).



7. Stamp the greetings on Whisper White Cardstock. Then die cut those along with the Basic Black cardstock with the Ornate Frames Dies. Layer the Whisper White pieces on the Basic Black pieces.
8. Punch out five bats with the To Every Season Punch Pack in Basic Black cardstock. Add Mini Black Stampin' Dimensionals to the back of each bat and adhere three bats to the top front and two bats to the inside (top of white section).
9. Add the greeting pieces with Black Stampin' Dimensionals. Adhere the inside one to the white panel inside the card. The inside greeting and frame will be the stopper for your easel card so the middle section can pop up (shown below).



10. Position the greeting and frame for the front over the center flap fold line and adhere the bottom portion with Black Stampin' Dimensionals below the fold line, so the greeting pops up when the easel card is opened.



11. Adhere black dots from the Monster Bash Enamel Shapes on the centers of the designer paper spider webs.

# Halloween Candy Book Box



## **Supply List:**

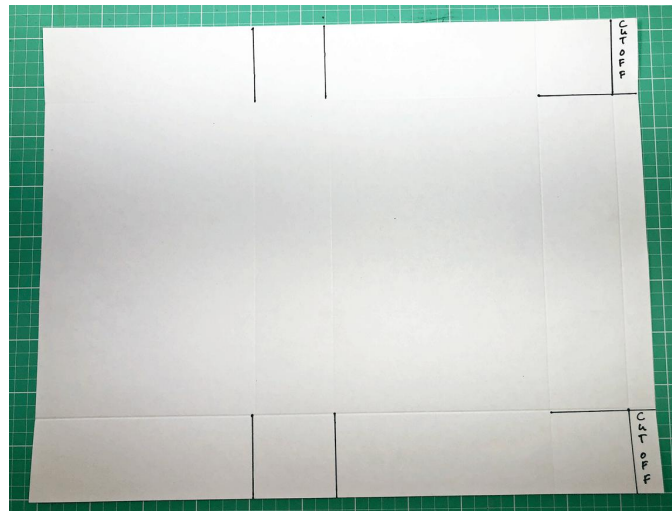
- 153040 Spooktacular Bash Bundle
- 132708 Memento Tuxedo Black Ink
- 150447 Monster Bash Designer Series Paper
- 121045 Basic Black Cardstock
- 105117 Pumpkin Pie Cardstock
- 101910 Shimmery White Cardstock
- 141705 Layering Circle Dies
- 133782 2" Circle Punch
- 146320 Detailed Trio Punch
- 150665 Stylish Scroll Embossing Folder
- 144585 Daffodil Delight Dark Stampin' Blends Marker
- 147934 Real Red Dark Stampin' Blends Marker
- 145058 Smoky Slate Stampin' Blends Markers Combo Pack
- 122334 Simply Scored Scoring Board
- 102300 Bone Folder
- 127853 Silicon Craft Sheet
- 104330 Stampin' Dimensionals
- 138995 Tear & Tape Adhesive
- 110755 Multipurpose Liquid Glue
- Hot Glue Gun

## **Project Details:**

- Monster Bash Designer Series Paper
  - 6-1/8" x 10-1/2"
  - 11-3/4" x 9-1/8"
  - 2-1/2" x 12" (2 pieces)
- Basic Black Cardstock
  - 4" x 4"
  - 3" x 3"
- Pumpkin Pie Cardstock
  - 3" x 3"
- Shimmery White Cardstock
  - 3" x 3"

## **Instructions:**

1. Place 6-1/8" x 10-1/2" piece of Monster Bash Designer Series Paper in landscape orientation on Simply Scored Scoring Board and score at 4-1/4" and 6-1/4".
2. Fold and burnish on score lines with Bone Folder. Use Bone Folder to gently curl in between score lines to create the curved spine of book cover.
3. Place 11-3/4" x 9-1/8" piece of Monster Bash Designer Series Paper in landscape orientation on Simply Scored Scoring Board and score at 1/2", 2", 6-1/8" and 7-5/8". Rotate to portrait orientation and score at 1-1/2" and 7-5/8". Fold and burnish on all score lines with Bone Folder.
4. Cut tabs and remove 1/2" rectangles as designated with solid lines. See picture below.



5. Use the diagram below as a guide to know which corners to round using Detailed Trio Punch.



6. Place Tear & Tape Adhesive on the flaps pictured below.



7. Fold in the sides to create the box insert for your book cover. Be sure to line up edges perfectly then secure with Tear & Tape Adhesive. See the first picture below. One side of your box will remain open without adhesive, this makes the side opening of box. See the center picture below. The small tabs fold in, and then the long tab folds over and tucks in making your book box re-closeable. Cool, right? See the end picture below.



- Place Tear & Tape Adhesive on the inside of the book cover and adhere to box. Don't put any adhesive inbetween the center score lines that form the book spine.



- Score both pieces of 2-1/2" x 12" Designer Series Paper every 1/2". Fold back and forth in accordion fashion. Using Multipurpose Liquid Glue, adhere the two strips together to form a continuous ring.
- Punch a 2" circle using 3" x 3" piece of Basic Black Cardstock and squeeze hot glue in the center. Place the black circle inside the ring designer series paper. Press the designer series paper down into the hot glue to create a rosette.
- Die cut the largest plain circle from Layering Circle Dies using the 4" x 4" piece of Basic Black Cardstock. Emboss the circle using the Stylish Scroll Embossing Folder.
- Stamp Dracula image on Shimmery White Cardstock using Memento Tuxedo Black Ink. Color in the background using Stampin' Blends Markers. Cut out image using the die from Ornate Frame Dies.
- Die cut layering frame from Ornate Frame Dies using Pumpkin Pie Cardstock. Layer Dracula to the Pumpkin Pie frame with Stampin' Dimensionals.
- Adhere the Pumpkin Pie frame to embossed circle using Multipurpose Liquid Glue, and adhere the focal image to rosette using the same adhesive.



# Monster Bash Box



## **Supply List:**

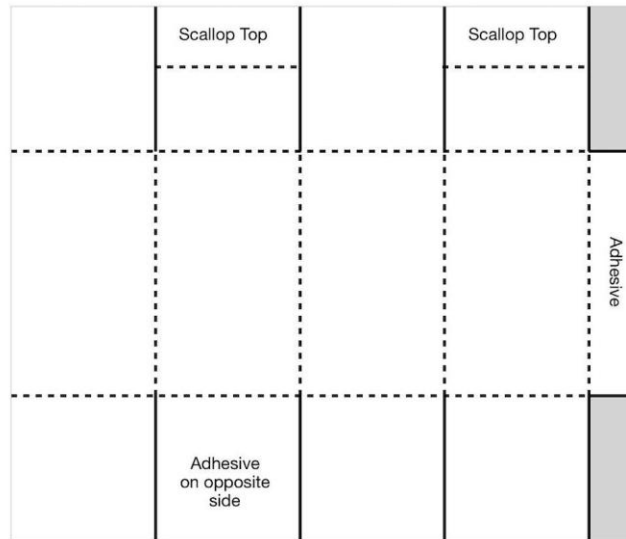
- 153040 Spooktacular Bash Bundle
- 150544 Spooktacular Bash Cling Stamp Set
- 132708 Tuxedo Black Memento Ink Pad
- 150447 Monster Bash Designer Series Paper
- 120953 Crumb Cake 8-1/2" x 11" Cardstock
- 121045 Basic Black 8-1/2" x 11" Cardstock
- 147897 Black 5/8" Glittered Organdy Ribbon
- 104199 Linen Thread
- 150664 Ornate Frames Dies
- 150448 Monster Bash Enamel Shapes
- 149518 Delightful Tag Topper Punch
- 144107 Take Your Pick
- 122334 Simply Scored
- 102300 Bone Folder
- 110755 Multipurpose Liquid Glue
- 150893 Black Stampin' Dimensionals Combo Pack
- 138995 Tear & Tape Adhesive

## **Project Details:**

- Crumb Cake Cardstock
  - 8-1/2" x 7-1/2"
  - 3" x 3" for die cutting
- Monster Bash Designer Series Paper
  - 1-3/4" x 3-1/4" (four pieces)
  - 1-3/4" x 3/4" (two pieces)
- Basic Black Cardstock
  - 3" x 3" for die cutting

## **Instructions:**

1. Place the 8-1/2" x 7-1/2" piece of Crumb Cake Cardstock on the Simply Scored Scoring Tool and score on the landscape side (8-1/2" side) at 2", 4", 6", 8". Turn on portrait side (7-1/2" side) and score at 2" & 5-1/2".
2. Cut the box using the diagram below.



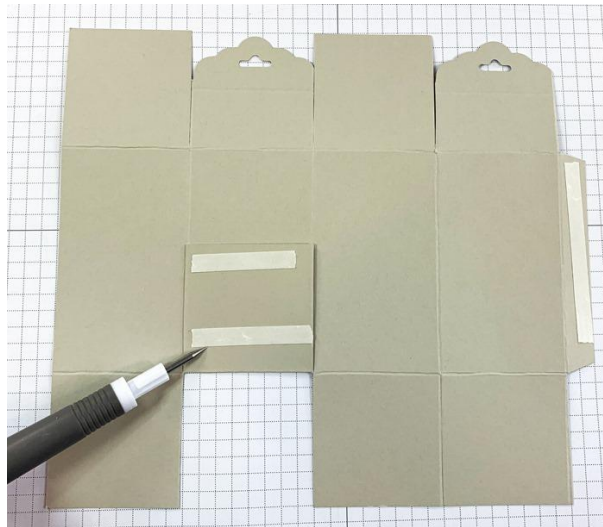
Remove Shaded - Score on Dotted Lines - Cut on Solid Lines

3. Place this layer back on the Simply Scored Scoring Tool with the 1/2" tab at the tip and score at 1" on two of the tabs. (The top one, then skip one and score the next). See picture below.



4. Take the Delightful Tag Topper Punch to punch the sections you just scored as shown above.

5. Use Tear & Tape Adhesive and assemble the box.



6. Add Monster Bash Designer Series Paper to box.
7. Thread Black 5/8" Glittered Organdy Ribbon through the hole and tie with Linen Thread.
8. Stamp image from Spooktacular Bash Stamp Set with Tuxedo Black Memento Ink and cut out with Ornate Frames Dies. Cut out an Ornate Frame with Basic Black Cardstock. Add the greeting to the Basic Black frame with a Black Stampin' Dimensional. Add to front of box with a Black Stampin' Dimensional.
9. Add Monster Bash Enamel Shapes (raven and dots) with the Take Your Pick Tool.



# Caramel Apple Curvy Keepsakes Box



## **Supply List:**

- 151331 Itty Bitty Greetings Stamp Set
- 102482 Real Red Cardstock
- 115318 Soft Suede Cardstock
- 102584 Garden Green Cardstock
- 120953 Crumb Cake Cardstock
- 147115 Soft Suede Stampin' Pad
- 150644 Mini Curvy Keepsakes Box Dies
- 144667 Leaf Punch
- 119869 ½" Circle Punch
- 143715 Pretty Label Punch
- 150457 Holiday Rhinestone Basic Jewels
- 103579 Paper Snips
- 102300 Bone Folder
- 110755 Multipurpose Liquid Glue
- Paper cutter
- Die-cutting machine
- Candy

## **Project Details:**

- Real Red Cardstock
  - 5-1/2" x 5-1/2"
- Soft Suede Cardstock
  - 4" x 4"
- Garden Green Cardstock
  - Scrap for punching two sets of leaves
- Crumb Cake Cardstock
  - 4" x 1/2"

## **Instructions:**

1. Die-cut the full Mini Curvy Keepsakes Box from the Real Red Cardstock.
2. Die-cut just the middle of the Mini Curvy Keepsakes Box from the Soft Suede Cardstock.

- Using the Pretty Label Punch, insert and punch each of the four flaps of the Soft Suede piece as shown. The flaps should be about an inch high.



- Use Bone Folder to curl the four sides of the Real Red and the Soft Suede pieces.
- Glue the “caramel” to the bottom and outside of the “apple” (Soft Suede to the Real Red) with Multipurpose Liquid Glue. Allow to dry.
- Insert one end of the Crumb Cake strip coming in from the side of the ½” Circle Punch. Then pull the cardstock through the hole in the bottom of the punch, pull it through until the other end is almost out, and punch to get a curved end on the “popsicle stick.”
- Stamp the sentiment onto the top of the front and top of the back of the stick.
- Assemble box with candy on the inside making sure the candy will allow for the stick to come into the box. In other words, don’t overfill. Fill with candy that will be loose or create a gap. (I enclosed 4 pieces of wrapped candy that were propped up side-by-side.)
- Insert the stick between the two handles and down through the candy into the box.
- Stack the punched leaves and trim off the ends. Place one set of leaves on either side of the handles. Glue the top leaf on each side just to the stick (not the box handles). This way the stick can be pulled out without wrecking the box or the leaves.



11. Embellish with a large and small Cherry Cobbler rhinestone on each side of the apple.
12. Give as a fall treat to teachers, friends and family.



# Snowman Season Gift Box



## **Supply List:**

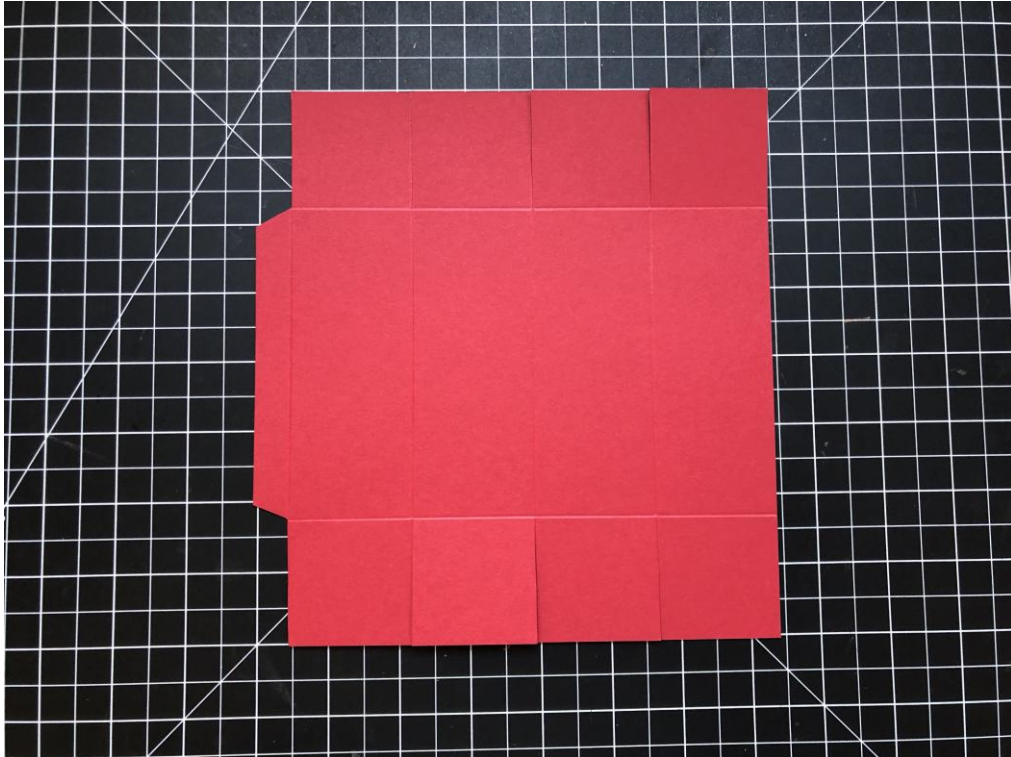
- 152337 Snowman Season Bundle
- 132708 Memento Tuxedo Black Ink
- 102482 Real Red Cardstock
- 140272 Whisper White Thick Cardstock
- 150393 Let It Snow Specialty Designer Series Paper
- 104430 Stampin' Dimensionals
- 138995 Tear & Tape Adhesive
- 150425 Let It Snow Embellishment Kit
- 141704 3" x 6" Gusseted Cello Bags
- 150446 Seaside Spray ¼" Metallic Ribbon
- 147031 Light Flirty Flamingo Stampin' Blend (cheeks)
- 144578 Light Pumpkin Pie Stampin' Blends (nose)
- 110755 Multipurpose Liquid Glue

## **Project Details:**

- Whisper White Thick Cardstock
  - Scrap for stamping and punch snowman
- Real Red Cardstock
  - 7-1/2" x 8"
- Let It Snow Specialty Designer Series Paper
  - Four – 1-1/2" x 4-1/4"
  - Four – 1-1/2" x 1-1/2" (use a different print on this one)

## **Instructions:**

1. Score Real Red cardstock at 1-3/4", 3-1/2", 5-1/4" and 7" on the portrait side (7-1/2" side). Turn and score at 1-3/4" and 6-1/4" on the landscape side (8" side).
2. Trim in on score lines on each end and trim away the small rectangles on each end of the 1/2" tab. See photo.



3. Add larger designer series paper pieces to each panel in the center of the box.



4. Flip the box over and add the smaller designer series paper pieces to the top flaps on one end of the box. These flaps will get folded down when box is assembled. Make sure to use two different prints of designer series paper.
5. Use Tear & Tape adhesive and add to the  $\frac{1}{2}$ " tab and to one flap at the bottom of the box. This is the last flap to get closed to finish the bottom of the box.
6. Fold down the top flaps and adhere them to the sides of the box.



7. Add candy or treat to cello bag, place bag in box and use ribbon to tie the top.
8. Stamp snowman and punch. Use Stampin' Blends to color cheeks and nose and adhere to box with Stampin' Dimensionals. Use the Let It Snow embellishment kit to add hat, scarf and arms to the snowman. Use Multipurpose Liquid Glue for the felt embellishments.

# Harvest Hellos Carmel Apple Pop Cover



## **Supply List:**

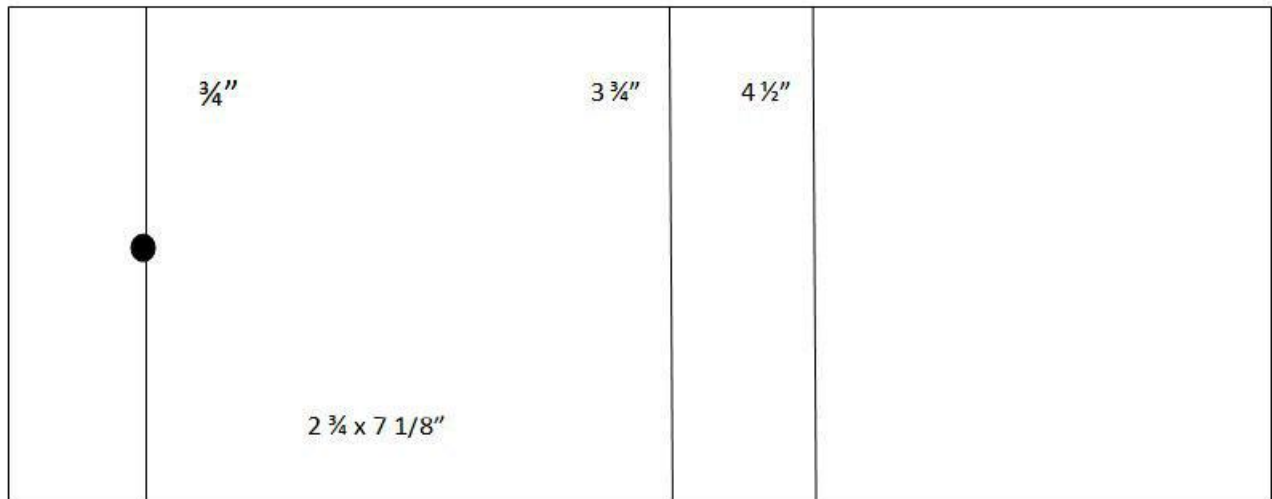
- 153037 Harvest Hellos Bundle
- 149317 Parcels & Petals Stamp Set
- 147115 Soft Suede Classic Stampin' Pad
- 147095 Granny Apple Green Classic Stampin' Pad
- 149613 Brights 6" x 6" Designer Series Paper
- 100730 Whisper White Cardstock
- 115318 Soft Suede Cardstock
- 146990 Granny Apple Green Cardstock
- 120953 Crumb Cake Cardstock
- 141491 Classic Label Punch
- 141708 Layering Squares Dies
- 145372 Stitched Shapes Dies
- 147808 3/16" Linen Trim
- 122334 Simply Scored Tool
- 102300 Bone Folder
- 138995 Tear & Tape Adhesive
- 110755 Multipurpose Liquid Glue
- 103683 Mini Glue Dots
- 104430 Stampin' Dimensionals
- 3/16" Hole Punch – I used a Crop-a-dile
- Tootsie Carmel Apple Lollipop

## **Project Details:**

- Granny Apple Green Cardstock
  - 7-1/8" x 2-3/4" scored on the 7-1/8" side at 3/4", 3-3/4" and 4-1/2"
  - 1" x 3" scrap for apple leaf
- Soft Suede Cardstock
  - 2-1/4" scalloped Layering Square
  - 1" x 3" scrap for apple stem
- Whisper White Cardstock
  - 2-1/8" square Stitched Shapes
- Crumb Cake Cardstock
  - 1" x 3" for punching the Classic Label
- Brights 6" x 6" Designer Series Paper
  - 2" x 3" for apple

## Instructions:

1. Work the Granny Apple Green Cardstock on the score lines using your Bone Folder. Punch a  $\frac{3}{16}$ " hole centered in the first score line. See diagram below. Stamp the last panel with the floral image from Parcels & Petals using Granny Apple Green Classic Stampin' Pad.



2. Slide the lollipop stick into the hole from the inside, unstamped side of the lollipop cover. Add a strip of Tear & Tape across the  $2\frac{3}{4}$ " far left edge. Fold to wrap the lollipop to secure shut.
3. Die cut Whisper White Stitched Shape square and Soft Suede scalloped Layering Square and adhere them together with Multipurpose Liquid Glue. Then adhere to the front of the lollipop cover with Stampin' Dimensionals.
4. Stamp the apple image on the Poppy Parade gingham paper using Soft Suede ink. Stamp the apple stem on Soft Suede Cardstock using the same ink. Stamp the apple leaf on Granny Apple Green cardstock with Granny Apple Green ink. Punch your apple pieces.
5. Stamp the sentiment on Crumb Cake Cardstock with Soft Suede ink and punch out right of center with the Classic Label Punch.
6. Adhere the apple and stem to the stitched square with Multipurpose Liquid Glue. Adhere the leaf and sentiment with Stampin' Dimensionals.
7. Tie a little bow from the  $\frac{3}{16}$ " Braided Linen Trim and adhere to the Classic Label sentiment with a Mini Glue Dot.