

Kitchen Table Stamper - Honey Bee Sweet Treats Class

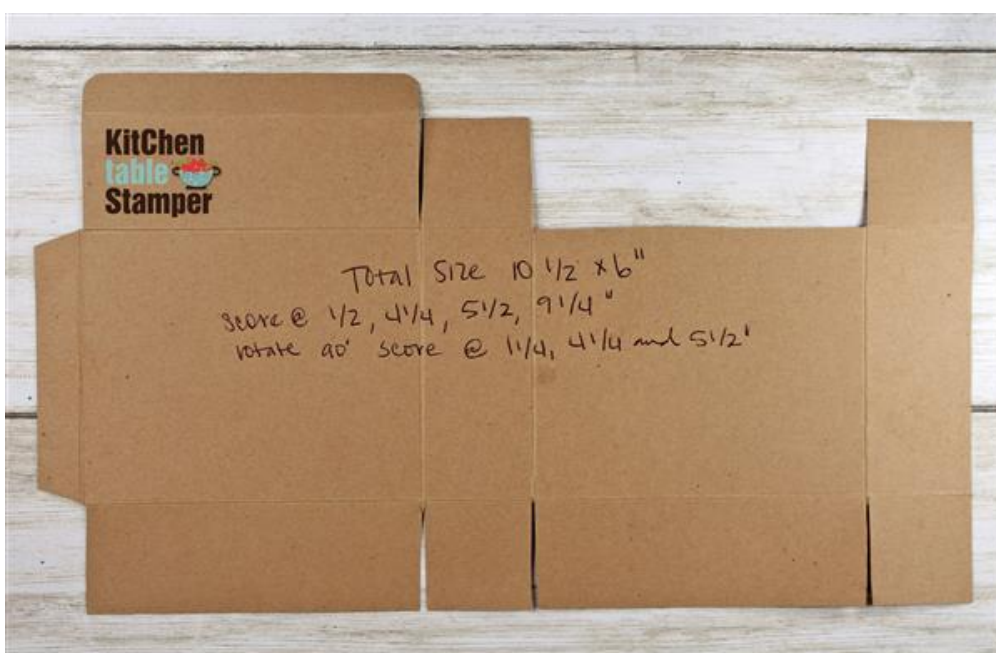
Wishing You Sunshine Bun Box

Marisa Alvarez
847 922-6795 call/text
marisa@kitchentablestamper.com
marisaalvarez.stampinup.net



Measurements:

Pear Pizzazz Cardstock: 10-1/2 x 6", score on the 10-1/2" side at 1/2, 4-1/4, 5-1/2, and 9-1/4" then rotate 90 degrees and score at 1-1/4, 4-1/4 and 5-1/2". Trim according to the template photo below.



Kitchen Table Stamper - Honey Bee Sweet Treats Class

Wishing You Sunshine Bun Box

Marisa Alvarez
847 922-6795 call/text
marisa@kitchentablestamper.com
marisaalvarez.stampinup.net

Whisper White Cardstock:

- 2-7/8" stitched circle cut with the Stitched Shapes Dies
- scraps for punching two flowers using the Small Bloom Punch
- 3-3/4 x 1-1/4" for stamping and cutting two bees using the Honey Bee Bundle

Terracotta Tile Cardstock: 1/4" circle

Mint Macaron Cardstock: 2 x 3" for punching a leaf

So Saffron Cardstock: 2-3/4 x 2-1/2" for stamping and cutting the bee hive with the Honey Bee Bundle

Soft Suede Cardstock: 3-1/16" scallop circle cut using the Layering Circles Dies

Ornate Garden Specialty Designer Series Paper: 2-3/4 x 3-1/2"

Terracotta Tile Scallop Edge Linen Ribbon: about 10"

Instructions:

1. Prepare your Pear Pizzazz box base according to the measurements and photo above. Apply Tear & Tape Adhesive to the outside of the box on the side glue tab. Add Tear & Tape Adhesive to the inside of the front bottom tab. Fold and assemble the box. See the photo below.



Kitchen Table Stamper - Honey Bee Sweet Treats Class

Wishing You Sunshine Bun Box

Marisa Alvarez
847 922-6795 call/text
marisa@kitchentablestamper.com
marisaalvarez.stampinup.net

2. Cut and adhere your designer series paper to the front of the box.
3. Stamp the greeting on the Whisper White stitched circle using Soft Suede ink. Stamp a the bees on the scrap of Whisper White using Soft Suede ink and die cut them and color with So Saffron Blends. Stamp the hive on the So Saffron Cardstock scrap using Daffodil Delight ink and die cut.
4. Adhere the stitched circle to the Soft Suede scallop circle using Multipurpose Liquid Glue. Adhere the hive under the sentiment using Mini Stampin' Dimensionals. Cut the bottom edge off the circle and adhere to the box with Multipurpose Liquid Glue. Adhere the bees using a mixture of Multipurpose Liquid Glue and Mini Stampin' Dimensionals.
5. Punch the small blooms from Whisper White Cardstock. Punch the leaf from Mint Macaron Cardstock. Punch the flower center from Terracotta Tile Cardstock. Shape the flowers and adhere them together with a Mini Stampin' Dimensional, adhere the 1/4" circle with a half of Mini Dimensional. Adhere the leaf to the back of the flower with Multipurpose Liquid Glue. Adhere the flower to the hive with Multipurpose Liquid Glue.
6. Cut the scallop edge off of about 9" of Scallop Linen Ribbon and tie a bow. Adhere it to the box using a Mini Glue Dot.
7. Embellish with Gilded Gems.

Kitchen Table Stamper - Honey Bee Sweet Treats Class

Wishing You Sunshine Bun Box

Marisa Alvarez
847 922-6795 call/text
marisa@kitchentablestamper.com
marisaalvarez.stampinup.net

- [Honey Bee Bundle - 153792](#)
- [Stitched Shapes Dies - 152323](#)
- [Layering Circles Dies - 151770](#)
- [Leaf Punch - 144667](#)
- [Small Bloom Punch - 152316](#)
- [Ornate Garden Specialty Designer Series Paper - 152488](#)
- [Pear Pizzazz 8-1/2" X 11" Cardstock - 131201](#)
- [Soft Suede 8-1/2" X 11" Cardstock - 115318](#)
- [Whisper White 8-1/2" X 11" Cardstock - 100730](#)
- [Terracotta Tile 8-1/2" X 11" Cardstock - 150884](#)
- [So Saffron 8-1/2" X 11" Cardstock - 105118](#)
- [Daffodil Delight Classic Stampin' Pad - 147094](#)
- [Soft Suede Classic Stampin' Pad - 147115](#)
- [So Saffron Stampin' Blends Combo Pack - 149557](#)
- [Terracotta Tile 1/2" \(1.3 Cm\) Scalloped Linen Ribbon - 149705](#)
- [Gilded Gems - 152478](#)
- [Simply Scored - 122334](#)
- [Bone Folder - 102300](#)
- [Paper Snips - 103579](#)
- [Tear & Tape Adhesive - 138995](#)
- [Multipurpose Liquid Glue - 110755](#)
- [Mini Stampin' Dimensionals - 144108](#)
- [Mini Glue Dots - 103683](#)