

# Game On - Fun and Games Cookie Box

Camp Wanna Stamp 2020 - Score Keeper Badge

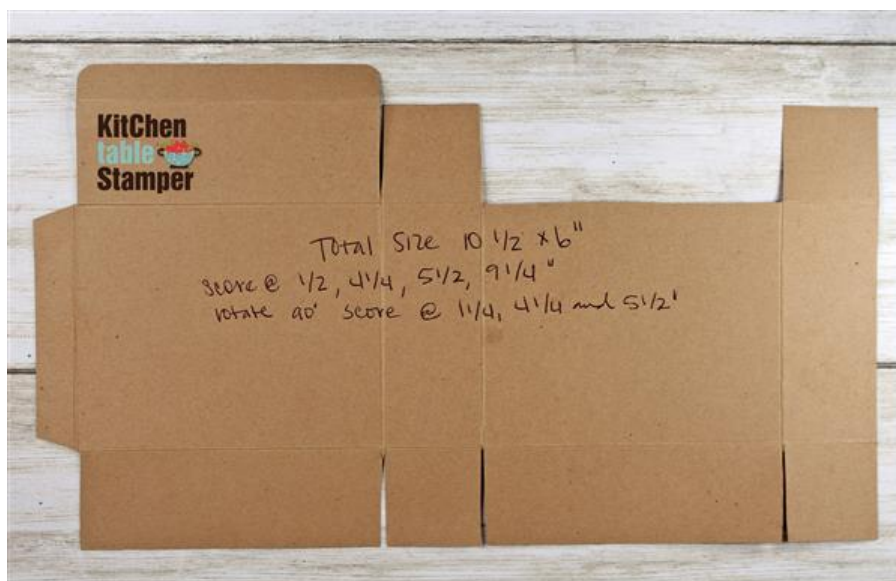
Marisa Alvarez  
847 922-6795 call/text  
[marisa@kitchentablestamper.com](mailto:marisa@kitchentablestamper.com)  
[marisaalvarez.stampinup.net](http://marisaalvarez.stampinup.net)



## Measurements:

Basic Black Cardstock:

- 10-1/2 x 6", score on the 10-1/2" side at 1/2, 4-1/4, 5-1/2, and 9-1/4" then rotate 90 degrees and score at 1-1/4, 4-14 and 5-1/2". Trim according to the template photo below.
- 2-1/4 x 2-1/2" for stamping and heat embossing the chess pieces from the Game On stamp set



# Game On - Fun and Games Cookie Box

## Camp Wanna Stamp 2020 - Score Keeper Badge

Marisa Alvarez  
847 922-6795 call/text  
[marisa@kitchentablestamper.com](mailto:marisa@kitchentablestamper.com)  
[marisaalvarez.stampinup.net](http://marisaalvarez.stampinup.net)

Whisper White Cardstock: Scrap for die cutting the 2-5/16 x 3-5/16" label using Tasteful Labels Dies

### World of Good Specialty Designer Series Paper:

Bumblebee with White Criss Cross Lines: 2-1/2 x 3-1/2"

Basic Black with Brass Criss Cross Lines: 1 x 3-1/2"

Linen Thread: 20"

### Instructions:

1. Using Basic Black Cardstock prepare the treat box base by scoring, folding and cutting as shown above in the measurements and the template photo. Prepare all designer series paper according to the measurements above. Wrap the Linen Thread around the 2-1/2" piece of designer series paper and make a medium bow on the left side. Adhere the two pieces of Designer Series Paper as shown using Multipurpose Liquid Glue. Make center on the front of the box and punch a thumb notch using a 3/4" circle punch. Fold and form the box securing with Tear & Tape Adhesive.
2. On the 2-1/4 x 2-1/2" piece of Basic Black Cardstock, stamp the chess pieces using a Versa Mark Ink Pad. Pour White Embossing Powder over the stamped image, tap off the excess, and heat emboss using your Heat Tool. Fussy cut the image out using your Paper Snips.
3. Do all die cutting according to the measurements provided. Using the Tuxedo Black Memento Pad, stamp the chessboards and the sentiment on the label. Adhere the label to the designer series paper using Stampin' Dimensionals. Be careful NOT to overlap the label with the opening of the box. **\*\*\*Hint\*\*\*** If you have the black Stampin' Dimensionals, that would work terrific on this project!!! Adhere the cut out chess pieces to the label as shown using Stampin' Dimensionals as well. Do NOT place any dimensionals where they may go over the top of the label and interfere with opening and closing the box.
4. Place the Chessmen Cookies treat inside the box and close the top flap.

# Game On - Fun and Games Cookie Box

## Camp Wanna Stamp 2020 - Score Keeper Badge

Marisa Alvarez  
847 922-6795 call/text  
[marisa@kitchentablestamper.com](mailto:marisa@kitchentablestamper.com)  
[marisaalvarez.stampinup.net](http://marisaalvarez.stampinup.net)

- [Game On Cling Stamp Set \(En\) - 152646](#)
- [Tasteful Labels Dies - 152886](#)
- [Tasteful Touches Bundle \(En\) - 154098](#)
- [World Of Good Specialty Designer Series Paper - 152491](#)
- [Basic Black 8-1/2" X 11" Cardstock - 121045](#)
- [Whisper White 8-1/2" X 11" Cardstock - 100730](#)
- [Tuxedo Black Memento Ink Pad - 132708](#)
- [Versamark Pad - 102283](#)
- [White Stampin' Emboss Powder - 109132](#)
- [Simply Scored Scoring Tool - 122334](#)
- [Stampin' Seal+ - 149699](#)
- [Tear & Tape Adhesive - 138995](#)
- [Multipurpose Liquid Glue - 110755](#)
- [Stampin' Dimensionals - 104430](#)
- [Mini Stampin' Dimensionals - 144108](#)
- [Black Stampin' Dimensionals Combo Pack - 150893](#)
- [Glue Dots - 103683](#)
- [Take Your Pick - 144107](#)
- [Bone Folder - 102300](#)
- [Paper Snips Scissors - 103579](#)
- [Stampin' Cut & Emboss Machine - 149653](#)
- [Paper Trimmer - 152392](#)
- [Stampin' Pierce Mat - 126199](#)
- [Simply Shammy - 147042](#)
- [Heat Tool - 129053](#)