

Kitchen Table Stamper Hearts & Kisses Valentine Treats Class

Take Out Box

Marisa Alvarez
847 922-6795 call/text
marisa@kitchentablestamper.com
marisaalvarez.stampinup.net



Measurements:

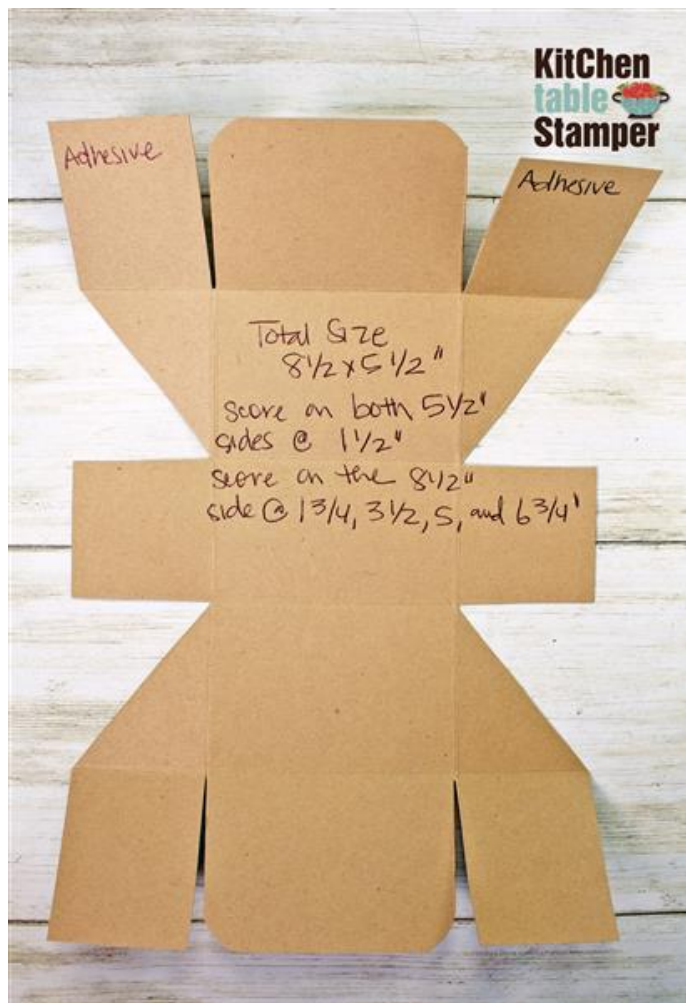
Basic Black Cardstock:

- scrap for punching the scallop oval from the Double Oval Punch
- 8-1/2 x 5-1/2", scored on both 5-1/2" sides at 1-1/2. Scored on the 8-1/2" side at 1-3/4, 3-1/2, 5, and 6-3/4". Connect the outer corner of the second and fourth segments with a diagonal line, either score it or use a pencil then cut away the triangle. Round the corners of the center segments on each end. Burnish and trim according to the template photo below:

Kitchen Table Stamper Hearts & Kisses Valentine Treats Class

Take Out Box

Marisa Alvarez
847 922-6795 call/text
marisa@kitchentablestamper.com
marisaalvarez.stampinup.net



Real Red Cardstock:

- 2-1/2 x 3-1/2 for punching the Everyday Label punch
- scrap for stamping and punching the lips using the Hearts & Kisses Bundle

Basic White Cardstock: scrap for die cutting the label from the Tasteful Label Dies

Magenta Madness Cardstock: scrap for stamping and punching two hearts using the Hearts & Kisses Bundle

True Love Designer Series Paper: four pieces 2-3/8 x 1-5/8", two with the top two corners rounded.

Real Red Double-Stitched Satin Ribbon: about 15"

Magenta Madness In Color Ribbon: about 15"

Kitchen Table Stamper Hearts & Kisses Valentine Treats Class

Take Out Box

Marisa Alvarez
847 922-6795 call/text
marisa@kitchentablestamper.com
marisaalvarez.stampinup.net

Instructions:

1. Prepare your take out box base from Basic Black Cardstock according to the measurements and template photo above. Adhere your designer series paper pieces to the center segments skipping the very center one as this is the bottom of the box. Assemble and secure with Tear & Tape adhesive and optional mini staples. I used the [Tim Holtz Mini Attacher](#).
2. Fill your box with treats. Punch a hole in the top tabs of the box using a [1/4" Circle Hand Held Punch](#), thread and tie with ribbons to secure.
3. Using Real Red ink, stamp the sentiment on the Basic White Tasteful Label. Cut the Basic Black scallop oval in half hot dog-wise and adhere the halves to the Real Red everyday label. There will be about 1/4" inch gap. Using Stampin' Dimensionals, adhere the sentiment label over the top of the scallop oval covering the gap then adhere to the front of the take out box.
4. Stamp a lips using Real Red ink on a scrap of Real Red Cardstock then punch with the Kiss Punch. Stamp two hearts using Magenta Madness ink on a Magenta Madness scrap and punch using the same punch.
5. Embellish with Matte Black Enamels and the stamped, punched Magenta Madness hearts and Real Red lips..

- [Hearts & Kisses Bundle - 156201](#)
- [Everyday Label Punch - 144668](#)
- [Double Oval Punch - 154242](#)
- [Tasteful Labels Dies - 152886](#)
- [Detailed Trio Punch - 146320](#)
- [True Love Designer Series Paper - 154281](#)
- [Basic Black 8-1/2" X 11" Cardstock - 121045](#)
- [Basic White 8-1/2" X 11" Cardstock - 159276](#)
- [Real Red 8-1/2" X 11" Cardstock - 102482](#)
- [Magenta Madness 8-1/2" X 11" Cardstock - 153080](#)
- [Real Red Classic Stampin' Pad - 147084](#)
- [Magenta Madness Classic Stampin' Pad - 153117](#)
- [Real Red 3/8" \(1 Cm\) Double-Stitched Satin Ribbon - 151155](#)
- [Magenta Madness 2020–2022 In Color Ribbon - 153623](#)
- [Matte Black Dots - 154284](#)

Kitchen Table Stamper Hearts & Kisses Valentine Treats Class

Take Out Box

Marisa Alvarez
847 922-6795 call/text
marisa@kitchentablestamper.com
marisaalvarez.stampinup.net

- [Simply Scored Scoring Tool - 122334](#)
- [Stampin' Cut & Emboss Machine - 149653](#)
- [Paper Trimmer - 152392](#)
- [Bone Folder - 102300](#)
- [Paper Snips Scissors - 103579](#)
- [Take Your Pick - 144107](#)
- [Simply Shammy - 147042](#)
- [Multipurpose Liquid Glue - 110755](#)
- [Black Stampin' Dimensionals Combo Pack - 150893](#)
- [Tear & Tape Adhesive - 138995](#)