

Kitchen Table Stamper October Online Classroom - Wishing You Well Fall Treat Box

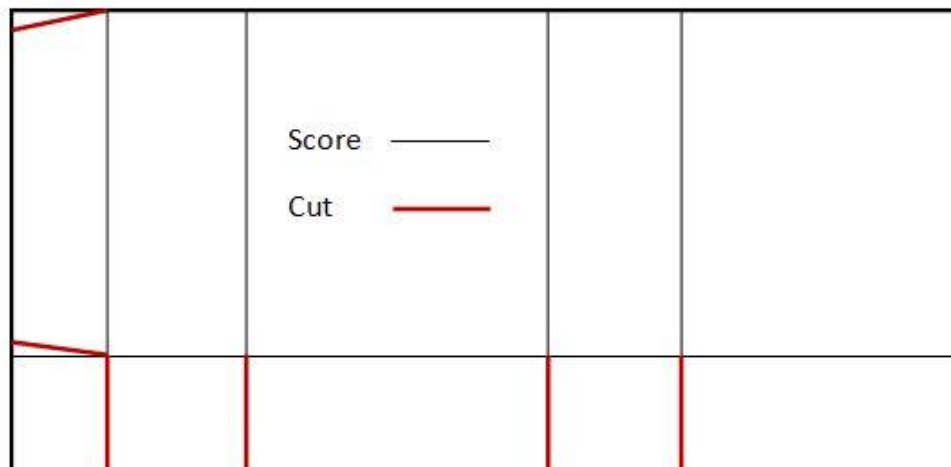
Marisa Alvarez
847 922-6795 call/text
marisa@kitchentablestamper.com

marisaalvarez.stampinup.net



Measurements:

Soft Suede: 4 x 6 1/2" for die cutting 2 frames from Stitched Labels Framelits and 2 3/4 x 5" scored at 3/4" on the portrait side and at 1/2", 1 1/4", 2 3/4" and 3 1/2" on the landscape side



Very Vanilla: largest Stitched Circle and 2 x 2 1/2" for stamping and fussy cutting the bow

Kitchen Table Stamper October Online Classroom - Wishing You Well Fall Treat Box

Marisa Alvarez
847 922-6795 call/text
marisa@kitchentablestamper.com
marisaalvarez.stampinup.net

Instructions:

1. Score the 2 3/4 x 5" strip of Soft Suede Cardstock. Use your Bone Folder to fold the score lines. Use your Paper Snips to cut the score lines on the landscape side of the Soft Suede strip. Don't cut past horizontal score line. Use Tear and Tape to assemble your box.
2. Die cut the two frames from the Stitched Labels Framelits out of Soft Suede Cardstock. Die cut the Stitched Circle out of Very Vanilla Cardstock.
3. Ink the wheat stamp with Crushed Curry, then color in the ends as shown using the Soft Suede Stampin' Write Marker. Huff and stamp on the Stitched Circle.
4. Stamp the bow image on Very Vanilla Cardstock using Coastal Cabana Stampin' Pad. Adhere as shown to the wheat image using Multipurpose Liquid Glue. Adhere the stitched circle to the Soft Suede frame also using Multipurpose Liquid Glue.
5. Score the bottom of the frames at 1/2" using Simply Scored Tool and burnish with a Bone Folder. Adhere the frames to the box using Tear and Tape and Multipurpose Liquid Glue as needed for the bottom of the box.
6. Place candy or other special item in the box.

Kitchen Table Stamper October Online Classroom - Wishing You Well

Marisa Alvarez
847 922-6795 call/text
marisa@kitchentablestamper.com

marisaalvarez.stampinup.net

Fall Treat Box

- [Wishing You Well Clear-Mount Stamp Set - 147864](#)
- [Stitched Labels Framelits Dies - 146828](#)
- [Soft Suede 8-1/2" X 11" Cardstock - 115318](#)
- [Very Vanilla 8-1/2" X 11" Cardstock - 101650](#)
- [Coastal Cabana Classic Stampin' Pad - 147097](#)
- [Crushed Curry Classic Stampin' Pad - 147087](#)
- [Neutrals Stampin' Write Markers - 147158](#)
- [Snail Adhesive - 104332](#)
- [Multipurpose Liquid Glue - 110755](#)
- [Tear & Tape Adhesive - 138995](#)
- [Big Shot - 143263](#)
- [Big Shot Die Brush - New Configuration - 144262](#)
- [Stampin' Pierce Mat - 126199](#)
- [Simply Scored - 122334](#)
- [Bone Folder - 102300](#)
- [Paper Snips - 103579](#)
- [Paper-Piercing Tool - 126189](#)