

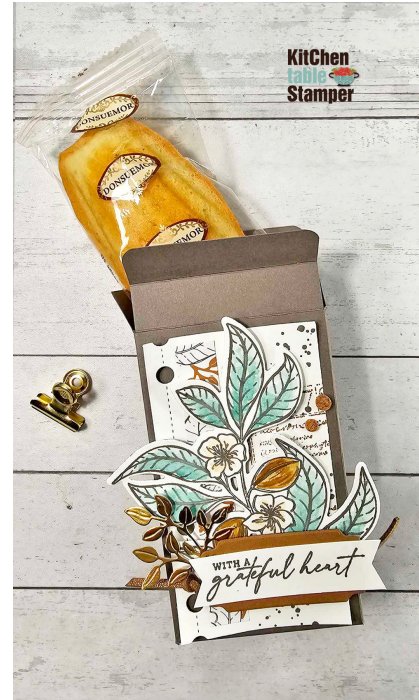


scan or click
to shop

Nature's Sweetness Madeleine Box



**CLICK HERE OR
SCAN THE CODE
FOR VIDEO TUTORIAL**



Supplies

- Lovely & Sweet Bundle - 162627
- Notes Of Nature Bundle - 162640
- Autumn Leaves Stamp Set - 162179
- Pebbled Path Cardstock - 161722
- Basic White Cardstock - 159276
- Pecan Pie Cardstock - 161717
- Gold Foil Sheets - 132622
- Pebbled Path Stampin' Pad - 161648
- Pecan Pie Stampin' Pad - 161665
- Lost Lagoon Stampin' Pad - 161678
- Petal Pink Stampin' Pad - 147108
- Petal Pink Stampin' Ink Refill - 147169
- Pecan Pie Stampin' Ink Refill - 161669
- Lost Lagoon Stampin' Ink Refill - 161776
- Adhesive-Backed Cork Rounds - 162643
- Gold 1/8" Faux Leather Trim - 162644
- Water Painters - 151298
- Stampin' Cut & Emboss Machine - 149653
- Paper Trimmer - 152392
- Simply Scored Scoring Tool - 122334
- Bone Folder - 102300
- Paper Snips Scissors - 103579
- Tear & Tape Adhesive - 154031
- Multipurpose Liquid Glue - 110755
- Stampin' Dimensionals - 104430
- Mini Glue Dots - 103683

Measurements

- **Pebbled Path Cardstock**

- 6-3/4 x 8"
 - scored on the 8" side: 1-1/4, 3-3/4, 5 and 7-1/2"
 - scored on the 6-3/4" side: 1-1/4, 5-1/2 and 6-1/8"

- **Basic White Cardstock**

- 2-1/4 x 4"
- scrap for stamping and die cutting the almond sprig using the Lovely & Sweet Bundle
- 5/8 x 2-1/2"

- **Pecan Pie Cardstock**

- scrap for die cutting the label using the Lovely & Sweet Dies

- **Gold Foil**

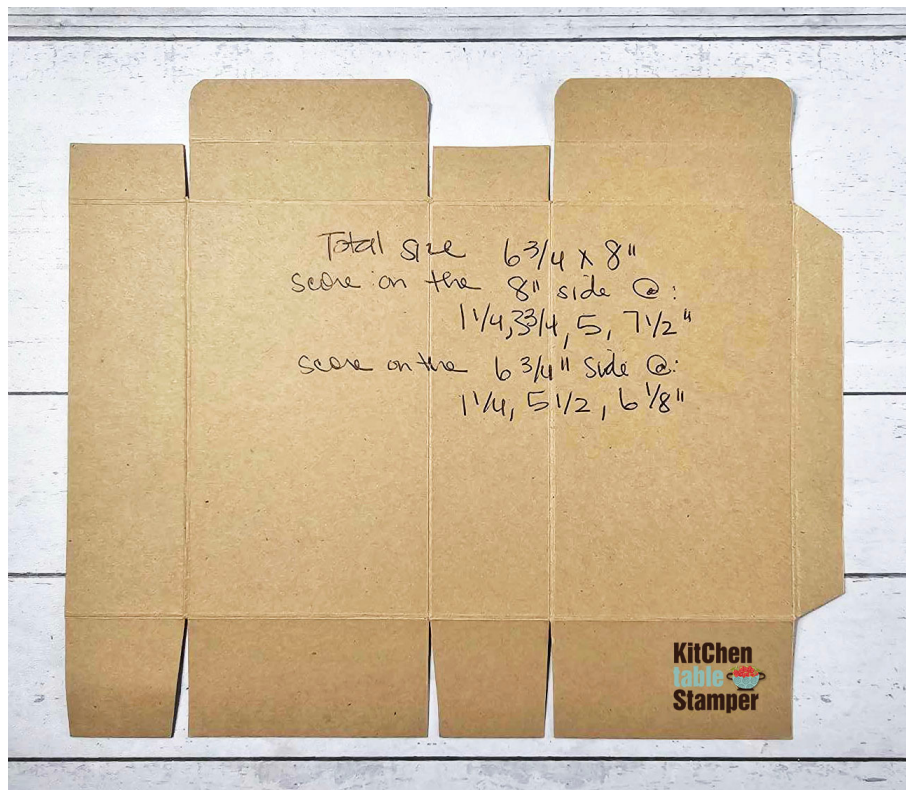
- scrap for cutting a leafy sprig using the Notes of Nature Dies

- **Nature's Sweetness Designer Series Paper**

- 1/2 x 3-3/4"

- **Gold Faux Leather Trim**

- about 5"



Instructions

1. Score, burnish with a Bone Folder, and trim the treat box according to the template photo and measurements above. Assemble the box using Tear & Tape Adhesive. Pop the [Madeleine Cookie](#) into the box and close with a [Bulldog Clip](#).
2. Die cut the punched edge on the white rectangle then stamp the field notes image on it with Pecan Pie ink and stamp the splatter on it with Pebbled Path ink. Glue the skinny strip of designer series paper next to the die cut edge. Roll the corners a little bit and adhere to the box.
3. Stamp the almond branch and sentiment on Basic White Cardstock using a Pebbled Path ink. Watercolor the image with a water painter and Lost Lagoon, Pecan Pie and Petal Pink ink. Die cut. Pop on the box with dimensionals.
4. Tie a knot in the Faux Leather Trim and adhere it to the box using a Mini Glue Dot.
5. Adhere the foil leafy sprig to the box using a Mini Glue Dot.
6. Cut chicken lips on the ends of the sentiment strip, glue it to the Pecan Pie die cut label. Pop the sentiment on the box with dimensionals.
7. Embellish with Adhesive Backed Cork Rounds.

