



scan or click  
to shop

## Changing Leaves Twinkie Box



**CLICK HERE OR  
SCAN THE CODE  
FOR VIDEO TUTORIAL**

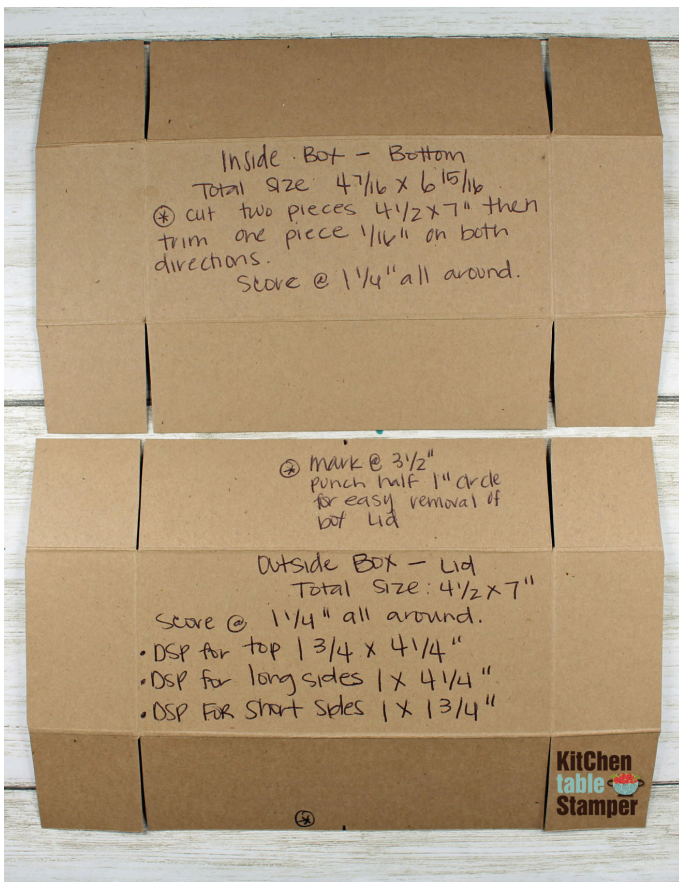


### Supplies

- Changing Leaves Bundle - 164139
- Sweet Days Of Autumn 12" X 12" Designer Series Paper - 166498
- Pecan Pie Cardstock - 161717
- Basic White Cardstock - 159276
- Old Olive Cardstock - 100702
- Cajun Craze Cardstock - 119684
- Petal Pink Cardstock - 146985
- Early Espresso Cardstock - 119686
- Pecan Pie Stampin' Pad - 161665
- Cajun Craze Stampin' Pad - 147085
- Petal Pink Stampin' Pad - 147108
- Petal Pink Stampin' Blends - 154893
- Silver & White 1/2" Sheer Ribbon - 162149
- Neutrals Adhesive-Backed Sequins - 161627
- Blending Brushes - 153611
- Stampin' Cut & Emboss Machine - 149653
- Specialty Plate - 154711
- Paper Trimmer - 152392
- Simply Scored Scoring Tool - 122334
- Paper Snips Scissors - 103579
- Bone Folder - 102300
- Take Your Pick - 144107
- Tear & Tape Adhesive - 154031
- Multipurpose Liquid Glue - 110755
- Mini Stampin' Dimensionals - 144108
- Mini Glue Dots - 103683
- Stampin' Pierce Mat - 126199

# Measurements

- **Pecan Pie Cardstock**
  - 4-1/2 x 7", scored all around at 1-1/4"
  - 4-7/16 x 6-15/16", scored all around at 1-1/4"
- **Basic White Cardstock**
  - scrap for die cutting the circle using the Changing Leaves Dies
- **Old Olive Cardstock**
  - scrap for embossing and fussy cutting the double leaf using the Changing Leaves Embossing Folder
- **Cajun Craze Cardstock**
  - scrap for stamping, embossing and die cutting a leaf of your choice using the Changing Leaves Bundle
- **Petal Pink Cardstock**
  - scrap for stamping, embossing and die cutting a leaf of your choice using the Changing Leaves Bundle
- **Early Espresso Cardstock**
  - scrap for die cutting the little leaf sprig using the Changing Leaves Dies
- **Sweet Days of Autumn Designer Series Paper**
  - 1-3/4 x 4-1/4"



# Instructions

1. Score the box and lid at 1-1/4" on all four sides. Mark the lid on the long sides at 3-1/2" then punch a semicircle on each long side of the box to make thumb notches for easy lid removal. Burnish the scores with a Bone Folder and trim the lid and bottom to match the template photo above.
2. Assemble the bottom of the box using Tear & Tape Adhesive.
3. Emboss the lid of the box using the Changing Leaves Embossing folder. Run it through in two passes. Do about 3/4 of the box, line up the end of the folder with the last score line, crank it through then do the last segment of the box in a second pass. Assemble the lid using Tear & Tape Adhesive.
4. Distress the edges of the designer series paper using your Paper Snips then ink the edges using Pecan Pie ink and a Blending Brush. Adhere the paper to the box lid.
5. Adhere the leaves to the box top using some liquid glue on the stems and dimensional adhesive on the ends of the leaves.
6. Color some white sheer ribbon with a Dark Petal Pink Stampin' Blend marker and allow it to dry. Cut it in half down the center then tie a double bow.
7. Stamp the greeting on the white circle using Cajun Craze ink.
8. Pop the bow and leaf sprig on the circle using Mini Glue Dots then staple through the knot twice. Adhere the circle to the box with Stampin' Dimensionals.
9. Embellish with Neutrals Adhesive Backed Sequins.

# Sources

- [Pumpkin Spice Twinkies and Iced Pumpkin Cupcake Bundle - Amazon](#)
- [Squeeze Bottles - Amazon](#)
- [Tiny Attacher - Amazon](#)
- [1" Circle Punch - Amazon](#)
- [Carrot, Corn and Pineapple box openers - Amazon](#)

